

RayBiotech, Inc.

3607 Parkway Lane suite 100
Norcross, GA 30092
Tel: 770-729-2992, 1-888-494-8555
Fax: 770-206-2393
Website: www.raybiotech.com
Email: info@raybiotech.com

Certificate of Analysis and Data Sheet

Rabbit Anti-Human S100 Protein Beta Antibody

Catalog No: 130-00023	Isotype: Rabbit IgG	Species: Human	Accession No: P04271
---------------------------------	-------------------------------	--------------------------	--------------------------------

Description

S100 calcium binding protein B or S100B is a protein of the S-100 protein family. S100 proteins are localized in the cytoplasm and nucleus of a wide range of cells, and involved in the regulation of a number of cellular processes such as cell cycle progression and differentiation. S100 genes include at least 13 members which are located as a cluster on chromosome 1q21; however, this gene is located at 21q22.3.

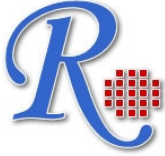
Applications

Summary of antibody applications and working conditions

Options Functions	YES	NO	Not determined	Recommended Work dilution or concentration
ELISA	*			1 : 64,000
Western Blotting	*			1 : 1,000
Enzyme Immunoassay(EIA)			*	
Immunohistology - paraffin			*	
Immunohistology - resin			*	
Immunoprecipitation			*	
Flow Cytometry			*	
Neutralization			*	

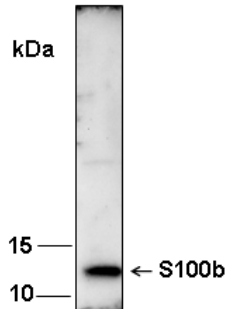
Note: Other applications are not tested yet. Optimal dilutions should be determined by each laboratory for each application

**The products are furnished for LABORATORY RESEARCH USE ONLY.
Not for diagnostic or therapeutic use.**



RayBiotech, Inc.

3607 Parkway Lane suite 100
Norcross, GA 30092
Tel: 770-729-2992, 1-888-494-8555
Fax: 770-206-2393
Website: www.raybiotech.com
Email: info@raybiotech.com



Western blot analysis of recombinant human S100b using anti-S100b antibody (1 :1,000)

Preparation

The immunogen was a synthetic peptide (S-100b). This antibody was produced from a rabbit immunized with this peptide conjugated with KLH. The IgG fraction was purified from rabbit serum by Protein G affinity chromatography.

Specificity

This antibody can specifically bind to human S-100b. The Cross reactivity with mouse and rat S-100b was not tested.

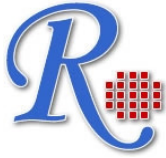
Reconstitution

Product is supplied as a powder obtained from lyophilization of purified antibody in PBS without preservatives. Reconstitute the antibody with sterile 1 x PBS to a final concentration of 1 mg/ml.

Storage

Store at 4°C if intended for use within one month, otherwise, store at -20°C to -80°C. The lyophilized antibody is stable for at least 18 months after the date of receipt when stored at -20°C to -80°C. After reconstitution, it can also be aliquoted and stored frozen at -20°C to -80°C in a manual defrost freezer for at least 6 months without detectable loss of activity. Upon reconstitution, the antibody can also be stored for 30 days at 4°C. **Please avoid freeze-thaw cycles, as this will lower the activity of the antibody.**

**The products are furnished for LABORATORY RESEARCH USE ONLY.
Not for diagnostic or therapeutic use.**



RayBiotech, Inc.

3607 Parkway Lane suite 100
Norcross, GA 30092
Tel: 770-729-2992, 1-888-494-8555
Fax: 770-206-2393
Website: www.raybiotech.com
Email: info@raybiotech.com

Reference

1. Lin, (2008). "The astrocyte odyssey". *Prog. Neurobiol.* **86** (11): 342–67.
2. Baudier, J.; and Cole, RD.; (1988). "Interactions between the microtubule-associated tau proteins and S100b regulate tau phosphorylation by the Ca²⁺/calmodulin-dependent protein kinase II". *J. Biol. Chem.* **263** (12): 5876–83.

**The products are furnished for LABORATORY RESEARCH USE ONLY.
Not for diagnostic or therapeutic use.**