

RayBiotech, Inc.

3607 Parkway Lane suite 100
Norcross, GA 30092
Tel: 770-729-2992, 1-888-494-8555
Fax: 770-206-2393
Website: www.raybiotech.com
Email: info@raybiotech.com

Certificate of Analysis and Data Sheet

Rabbit Anti-Human Prolactin Antibody

Catalog No: 130-00024	Isotype: Rabbit IgG	Species: Human	Accession No: P01236
---------------------------------	-------------------------------	--------------------------	--------------------------------

Description

Prolactin (PRL) also known as **luteotropic hormone (LTH)** is a protein that in humans is encoded by the *PRL* gene. Prolactin is a peptide hormone discovered by Henry Friesen. Prolactin also acts in a cytokine-like manner and as an important regulator of the immune system. Prolactin has important cell cycle related functions as a growth-, differentiating- and anti-apoptotic factor. As a growth factor binding to cytokine like receptors it has also profound influence on hematopoiesis, angiogenesis and is involved in the regulation of blood clotting through several pathways. Prolactin acts in endocrine, autocrine, and paracrine manner through the prolactin receptor and a large number of cytokine receptors.

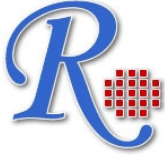
Applications

Summary of antibody applications and working conditions

Options / Functions	YES	NO	Not determined	Recommended Work dilution or concentration
ELISA	*			1 : 64,000
Western Blotting	*			1 : 1,000
Enzyme Immunoassay (EIA)			*	
Immunohistology - paraffin			*	
Immunohistology - resin			*	
Immunoprecipitation			*	
Flow Cytometry			*	
Neutralization			*	

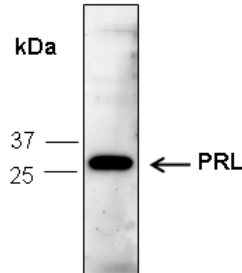
Note: Other applications are not tested yet. Optimal dilutions should be determined by each laboratory for each application

**The products are furnished for LABORATORY RESEARCH USE ONLY.
Not for diagnostic or therapeutic use.**



RayBiotech, Inc.

3607 Parkway Lane suite 100
Norcross, GA 30092
Tel: 770-729-2992, 1-888-494-8555
Fax: 770-206-2393
Website: www.raybiotech.com
Email: info@raybiotech.com



Western blot analysis of recombinant human PRL, using anti-PRL antibody (1 :1,000)

Preparation

The immunogen was a synthetic peptide (prolactin). This antibody was produced from a rabbit immunized with this peptide conjugated with KLH. The IgG fraction was purified from rabbit serum by Protein G affinity chromatography.

Specificity

This antibody can specifically bind to human prolactin. The cross reactivity with mouse and rat prolactin was not tested.

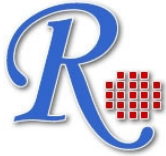
Reconstitution

Product is supplied as a powder obtained from lyophilization of purified antibody in PBS without preservatives. Reconstitute the antibody with sterile 1 x PBS to a final concentration of 1 mg/ml.

Storage

Store at 4°C if intended for use within one month, otherwise, store at -20°C to -80°C. The lyophilized antibody is stable for at least 18 months after the date of receipt when stored at -20°C to -80°C. After reconstitution, it can also be aliquoted and stored frozen at -20°C to -80°C in a manual defrost freezer for at least 6 months without detectable loss of activity. Upon reconstitution, the antibody can also be stored for 30 days at 4°C. **Please avoid freeze-thaw cycles, as this will lower the activity of the antibody.**

**The products are furnished for LABORATORY RESEARCH USE ONLY.
Not for diagnostic or therapeutic use.**



RayBiotech, Inc.

3607 Parkway Lane suite 100
Norcross, GA 30092
Tel: 770-729-2992, 1-888-494-8555
Fax: 770-206-2393
Website: www.raybiotech.com
Email: info@raybiotech.com

Reference

1. Evans, AM.; et al. (1989). "Mapping of prolactin and tumor necrosis factor-beta genes on human chromosome 6p using lymphoblastoid cell deletion mutants". *Somat. Cell Mol. Genet.* **15** (3): 203–13.
2. Bole-Feysot, C.; et al. (1998). "Prolactin (PRL) and its receptor: Actions, signal transduction pathways and phenotypes observed in PRL receptor knockout mice". *Endocrine Reviews* **19** (3): 225–268.

**The products are furnished for LABORATORY RESEARCH USE ONLY.
Not for diagnostic or therapeutic use.**