

RayBiotech, Inc.

3607 Parkway Lane suite 200
Norcross, GA 30092
Tel: 770-729-2992, 1-888-494-8555
Fax: 770-206-2393
Website: www.raybiotech.com
Email: info@raybiotech.com

Certificate of Analysis and Data Sheet Mouse Anti-TIMP1 Antibody

Catalog No.
130-10030

Isotype/Clone:
Mouse IgG1

Species:
Human

Accession No:
CAG46779

Description

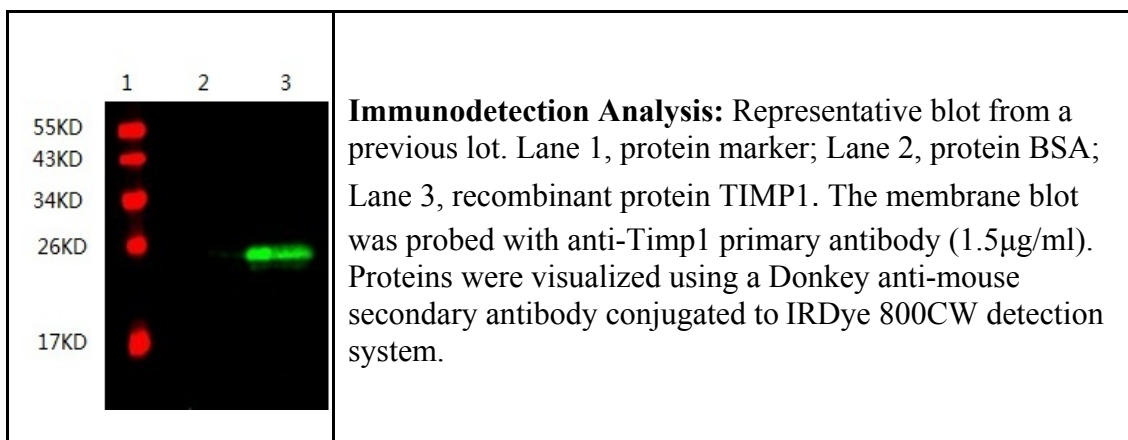
TIMP1 is a glycoprotein expressed in several tissues of organisms. It is a member of the TIMP family. The glycoprotein is a natural inhibitor of the matrix metalloproteinases (MMPs), a group of peptidases involved in degradation of the extracellular matrix. In addition to its inhibitory role against most of the known MMPs, the encoded protein is able to promote cell proliferation in a wide range of cell types, and may also have an anti-apoptotic function.

Applications

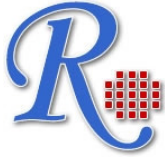
Table Summary of antibody applications and working conditions

Options / Functions	YES	NO	Not determined	Recommended Work dilution or concentration
ELISA	*			at least detecting 0.5ug/ml
Western Blotting	*			1-2 µg/ml
Immunohistology - frozen			*	
Immunohistology -paraffin			*	

Note: Other applications are not tested yet. Optimal dilutions should be determined by each laboratory for each application.



**The products are furnished for LABORATORY RESEARCH USE ONLY.
Not for diagnostic or therapeutic use.**



RayBiotech, Inc.

3607 Parkway Lane suite 200
Norcross, GA 30092
Tel: 770-729-2992, 1-888-494-8555
Fax: 770-206-2393
Website: www.raybiotech.com
Email: info@raybiotech.com

Preparation

Immunogen was recombinant protein derived from TIMP1. This antibody was produced from a hybridoma resulting from the fusion of a mouse myeloma with B cells obtained from a mouse immunized with the immunogen. The IgG fraction of tissue culture supernatant was purified by Protein G/A affinity chromatography.

Specificity

The antibody shows specific binding to its immunogen. Specific binding to recombinant and native TIMP-1 has not been tested.

Reconstitution

Product is supplied as a powder obtained from lyophilization of purified antibody in PBS without preservatives. Reconstitute the antibody with sterile 1 x PBS to a final concentration of 1 mg/ml.

Storage

Store at 4°C if intended for use within one month, otherwise, store at -20°C to -80°C. The lyophilized antibody is stable for at least 18 months after the date of receipt when stored at -20°C to -80°C. After reconstitution, it can be aliquoted and stored frozen at -20°C to -80°C in a manual defrost freezer for 6 months without detectable loss of activity. Upon reconstitution, the antibody can also be stored for 1 month at 4°C. **Please avoid freeze-thaw cycles, as this will lower the activity of the antibody.**

Reference

1. Hornebeck W (2004). Down-regulation of tissue inhibitor of matrix metalloproteinase-1 (TIMP-1) in aged human skin contributes to matrix degradation and impaired cell growth and survival. *Pathol. Biol.* 51 (10): 569–73.
2. Gardner J, Ghorpade A (2004). Tissue inhibitor of metalloproteinase (TIMP-1): the TIMPed balance of matrix metalloproteinases in the central nervous system. *J. Neurosci. Res.* 74 (6): 801–6.

**The products are furnished for LABORATORY RESEARCH USE ONLY.
Not for diagnostic or therapeutic use.**