

## RayBiotech, Inc.

3607 Parkway Lane, Suite 100  
Norcross, GA 30092  
Tel: 770-729-2992, 1-888-494-8555  
Fax: 770-206-2393  
Website: [www.raybiotech.com](http://www.raybiotech.com)  
Email: [info@raybiotech.com](mailto:info@raybiotech.com)

### Certificate of Analysis and Data Sheet

## Rabbit Anti-Human Bcl-2 Antibody, C-terminus

<b>Catalog No:</b> 130-00033	<b>Isotype:</b> Rabbit IgG	<b>Species:</b> Human	<b>Accession No:</b> NP_000624
---------------------------------	-------------------------------	--------------------------	-----------------------------------

### Description

B-cell lymphoma 2 (Bcl-2) is the member of the Bcl-2 family of apoptosis regulator proteins encoded by the BCL2 gene. The two isoforms of Bcl-2, isoform 1, also known as 1G5M, and isoform 2, also known as 1G5O/1GJH, exhibit similar fold. However, results in the ability of these isoforms to bind to the BAD and BAK proteins, as well as in the structural topology and electrostatic potential of the binding groove, suggest differences in antiapoptotic activity for the two isoforms. Most Bcl-2 family members contain a C-terminal transmembrane domain that functions to target these proteins to the outer mitochondrial and other intracellular membranes.

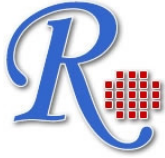
### Applications

Table Summary of antibody applications and working conditions

Options / Functions	YES	NO	Not determined	Recommended Work dilution or concentration
ELISA	*			1:64,000
Western Blotting	*			1:5000
Enzyme Immunoassay (EIA)			*	
Immunohistology (paraffin)			*	
Immunohistology (resin)			*	
Immunoprecipitation			*	
Flow Cytometry			*	
Neutralization			*	

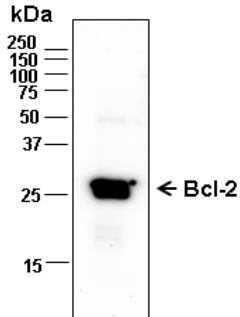
Note: Other applications are not tested yet. Optimal dilutions should be determined by each laboratory for each application

**The products are furnished for LABORATORY RESEARCH USE ONLY.  
Not for diagnostic or therapeutic use.**



## RayBiotech, Inc.

3607 Parkway Lane, Suite 100  
Norcross, GA 30092  
Tel: 770-729-2992, 1-888-494-8555  
Fax: 770-206-2393  
Website: [www.raybiotech.com](http://www.raybiotech.com)  
Email: [info@raybiotech.com](mailto:info@raybiotech.com)



Western blot analysis of 100 ng Bcl-2 using purified rabbit anti-Bcl-2 primary antibody (1:5,000  $\mu\text{g/ml}$ ). The blot was incubated with anti-rabbit HRP-conjugated IgG (1:10,000).

### Preparation

The immunogen was a synthetic peptide corresponding to the C-terminal region of Bcl-2. This antibody was produced from a rabbit immunized with this peptide conjugated with KLH. The IgG fraction was purified from rabbit serum by Protein G affinity chromatography.

### Specificity

This antibody was selected for its ability to specifically detect Bcl-2 from humans. There is no cross-reactivity with Caspase-3, Caspase-8 or Livin.

### Reconstitution

Product is supplied as a powder obtained from lyophilization of purified antibody in PBS without preservatives. Reconstitute the antibody with sterile de-ionized water to a final concentration of 1 mg/ml.

### Storage

Store at 4°C if intended for use within one month, otherwise, store at -20°C to -80°C. The lyophilized antibody is stable for at least 18 months after the date of receipt when stored at -20°C to -80°C. After reconstitution, it can be aliquoted and stored frozen at -20°C to -80°C in a manual defrost freezer for at least 6 months without detectable loss of activity. Upon reconstitution, the antibody can also be stored for 1 month at 4°C. **Please avoid freeze-thaw cycles, as this will lower the activity of the antibody.**

### Reference

Tsujimoto, Y.; et al., (1984). "Cloning of the chromosome breakpoint of neoplastic B cells with the t(14;18) chromosome translocation". *Science* **226** (4678): 1097–99.

Cleary, ML.; et al., (1986). "Cloning and structural analysis of cDNAs for bcl-2 and a hybrid bcl-2/immunoglobulin transcript resulting from the t(14;18) translocation". *Cell* **47** (1): 19–28.

**The products are furnished for LABORATORY RESEARCH USE ONLY.  
Not for diagnostic or therapeutic use.**