



## RayBiotech, Inc.

3607 Parkway Lane suite 200  
Norcross, GA 30092  
Tel: 770-729-2992, 1-888-494-8555  
Fax: 770-206-2393  
Website: www.raybiotech.com  
Email: info@raybiotech.com

### Certificate of Analysis and Data Sheet

# Rabbit anti-Tissue inhibitor of metalloproteinases 1 antibody

<b>Catalog No.</b> 130-10001	<b>Isotype:</b> Rabbit Ig G	<b>Species:</b> Human	<b>Accession No:</b> NM_003254
---------------------------------	--------------------------------	--------------------------	-----------------------------------

## Description

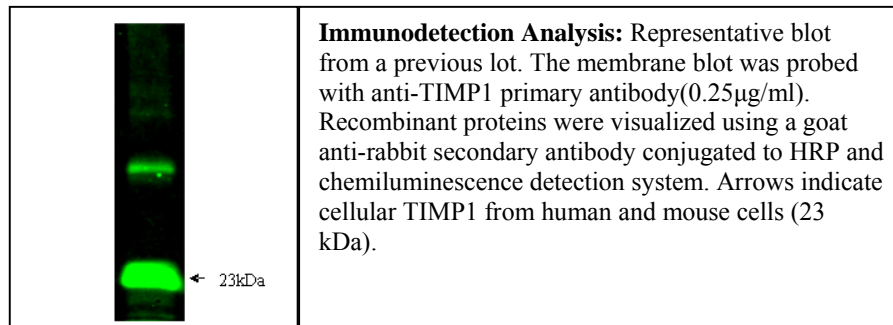
Tissue inhibitor of metalloproteinases 1 (TIMP1) is a glycoprotein expressed from the several tissues of organisms. It is one member of TIMP family. The glycoprotein is a natural inhibitor of the matrix metalloproteinases (MMPs), a group of peptidases involved in degradation of the extracellular matrix. In addition to its inhibitory role against most of the known MMPs, the encoded protein is able to promote cell proliferation in a wide range of cell types, and may also have an anti-apoptotic function. Tissue inhibitor of metalloproteinases contain 207 amino acids and having a molecular mass of 22 kDa.

## Applications

Table Summary of antibody applications and working conditions

Options / Functions	YES	NO	Not determined	Recommended Work dilution or concentration
ELISA	*			1:40000(at least detecting 25ng/ml)
Western Blotting	*			1:1000-5000(at least)
Enzyme Immunoassay(EIA)			*	

Note: Other applications are not tested yet. Optimal dilutions should be determined by each laboratory for each application



**The products are furnished for LABORATORY RESEARCH USE ONLY.  
Not for diagnostic or therapeutic use.**



## RayBiotech, Inc.

3607 Parkway Lane suite 200  
Norcross, GA 30092  
Tel: 770-729-2992, 1-888-494-8555  
Fax: 770-206-2393  
Website: [www.raybiotech.com](http://www.raybiotech.com)  
Email: [info@raybiotech.com](mailto:info@raybiotech.com)

---

### **Preparation**

Immunogen was full recombinant protein(Cys24-Ala207) derived from human Tissue inhibitor of metalloproteinases 1. This antibody was produced from a rabbit immunized with the immunogen. The IgG fraction was purified from rabbit serum followed by Protein A/G affinity chromatography.

### **Specificity**

The rabbit anti-human TIMP1 antibody specifically detected target derived from human recombinant protein at various concentrations. Cross reactivity with mouse and rat are expected from sequence similarity.

### **Reconstitution**

Supplied as lyophilized and purified antibody originally containing PBS, without **Preservative Stabilizers**, liking Sodium Azide. *It final concentration is indicated in shipping vial.*

The antibody is stable for at least years from the data of receipt when stored at  $-20^{\circ}\text{C}$  to  $-70^{\circ}\text{C}$ . Reconstituted antibody (suggesting with sterile PBS) can also be aliquotted and stored frozen at  $-20^{\circ}\text{C}$  to  $-70^{\circ}\text{C}$  in a manual defrost freezer for months without detectable loss activity. Upon reconstitution, the antibody can also be stored over months at  $4^{\circ}\text{C}$ . **Please avoid freeze-thaw cycles.**

### **Storage**

Store at  $-20^{\circ}\text{C}$ , if not intended for use within a month, Keep it at  $4^{\circ}\text{C}$  and minimize freezing and thawing when use.

### **Related products**

1. Rat TIMP-1 ELISA Kit For Serum, Plasma and Cell Culture Supernatant (cat# ELR-TIMP1-001)
2. Mouse TIMP-1 ELISA Kit For Serum, Plasma and Cell Culture Supernatant (cat#ELM-TIMP1-001)

### **Reference**

Hornebeck W. Down-regulation of tissue inhibitor of matrix metalloprotease-1 (TIMP-1) in aged human skin contributes to matrix degradation and impaired cell growth and survival. *Pathol. Biol.* 2004, 51 (10): 569–73.

**The products are furnished for LABORATORY RESEARCH USE ONLY.  
Not for diagnostic or therapeutic use.**