



RayBiotech, Inc.

3607 Parkway Lane suite 200
Norcross, GA 30092
Tel: 770-729-2992, 1-888-494-8555
Fax: 770-206-2393
Website: www.raybiotech.com
Email: info@raybiotech.com

Certificate of Analysis and Data Sheet

Rabbit anti-Tissue inhibitor of metalloproteinases 1 antibody

Catalog No. 130-10006	Isotype: Rabbit Ig G	Species: Human	Accession No: NM_003254
---------------------------------	--------------------------------	--------------------------	-----------------------------------

Description

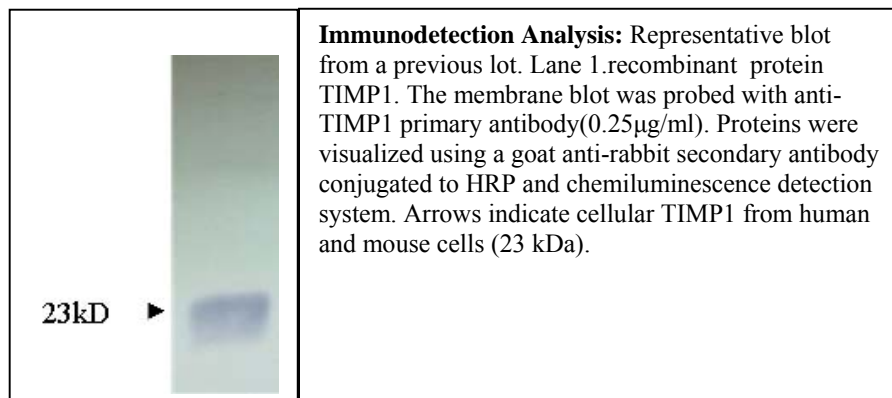
TIMP1 (Tissue inhibitor of metalloproteinases 1) is a glycoprotein expressed from the several tissues of organisms. It is one member of TIMP family. The glycoprotein is a natural inhibitor of the matrix metalloproteinases (MMPs), a group of peptidases involved in degradation of the extracellular matrix. In addition to its inhibitory role against most of the known MMPs, the encoded protein is able to promote cell proliferation in a wide range of cell types, and may also have an anti-apoptotic function.

Applications

Table Summary of antibody applications and working conditions

Options / Functions	YES	NO	Not determined	Recommended Work dilution or concentration
ELISA	*			1:3.2x10e5(at least detecting 32ng/ml)
Western Blotting	*			1:1000-5000(at least)
Enzyme Immunoassay(EIA)			*	

Note: Other applications are not tested yet. Optimal dilutions should be determined by each laboratory for each application.



**The products are furnished for LABORATORY RESEARCH USE ONLY.
Not for diagnostic or therapeutic use.**



RayBiotech, Inc.

3607 Parkway Lane suite 200
Norcross, GA 30092
Tel: 770-729-2992, 1-888-494-8555
Fax: 770-206-2393
Website: www.raybiotech.com
Email: info@raybiotech.com

Preparation

Immunogen was synthetic peptide derived from Human tissue inhibitor of metalloproteinases 1. This antibody was produced from a rabbit immunized with the immunogen. The IgG fraction was purified from rabbit serum followed by Protein A/G affinity chromatography.

Specificity

The rabbit anti-human TIMP1 antibody detects specifically target derived from human recombinant protein at various concentrations. Cross reactivity with mouse and rat are expected from sequence similarity.

Reconstitution

Supplied as lyophilized and purified antibody originally containing PBS, without **Preservative Stabilizers**, liking Sodium Azide. ***It final concentration is indicated in shipping vial.***

The antibody is stable for at least years from the data of receipt when stored at -20°C to -70°C . Reconstituted antibody (suggesting with sterile PBS) can also be aliquotted and stored frozen at -20°C to -70°C in a manual defrost freezer for months without detectable loss activity. Upon reconstitution, the antibody can also be stored over months at 4°C . **Please avoid freeze-thaw cycles.**

Storage

Store at -20°C , if not intended for use within a month, keep it at 4°C and minimize freezing and thawing when use.

Related products

- 1 Rat TIMP-1 ELISA Kit For Serum, Plasma and Cell Culture Supernatant (cat# ELR-TIMP1-001)
- 2 Recombinant Human Tissue Inhibitor of Metalloproteinase 1 (TIMP1), Western Blot Control (cat# 230-00003-WBC)
- 3 Mouse TIMP-1 ELISA Kit For Cell and Tissue Lysate (cat# ELM-TIMP1-001C)

Reference

MN Holten-Andersen et al. (1999) Quantitation of TIMP-1 in plasma of healthy blood donors and patients with advanced cancer. *British Journal of Cancer* 80(3/4), 495–503

**The products are furnished for LABORATORY RESEARCH USE ONLY.
Not for diagnostic or therapeutic use.**