



RayBiotech, Inc.

3607 Parkway Lane suite 200
Norcross, GA 30092
Tel: 770-729-2992, 1-888-494-8555
Fax: 770-206-2393
Website: www.raybiotech.com
Email: info@raybiotech.com

Certificate of Analysis and Data Sheet

Rabbit anti-Human natriuretic peptides B proprotein antibody

Catalog No: 130-10015	Isotype: Rabbit Ig G	Species: Human	Accession No: NP_002512
---------------------------------	--------------------------------	--------------------------	-----------------------------------

Description

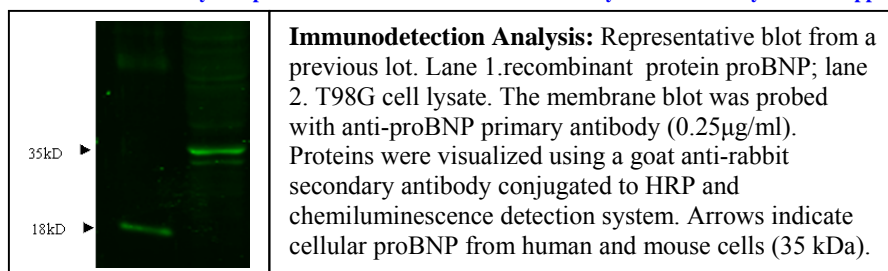
The natriuretic peptides B proprotein undergoes two cleavage events, one within the cell and a second after secretion into the blood. The protein's biological actions include natriuresis, diuresis, vasorelaxation, inhibition of renin and aldosterone secretion, and a key role in cardiovascular homeostasis. A high concentration of this protein in the bloodstream is indicative of heart failure. Mutations in this gene have been associated with postmenopausal osteoporosis. Cardiac hormone which may function as a paracrine antifibrotic factor in the heart. Also plays a key role in cardiovascular homeostasis through natriuresis, diuresis, vasorelaxation, and inhibition of renin and aldosterone secretion. Specifically binds and stimulates the cGMP production of the NPR1 receptor. Binds the clearance receptor NPR3.

Applications

Table Summary of antibody applications and working conditions

Options / Functions	YES	NO	Not determined	Recommended Work dilution or concentration
ELISA	*			1:20000(at least detecting 50ng/ml)
Western Blotting	*			1:1000-5000(at least)
Enzyme Immunoassay(EIA)			#	

Note: Other applications are not tested yet. Optimal dilutions should be determined by each laboratory for each application



**The products are furnished for LABORATORY RESEARCH USE ONLY.
Not for diagnostic or therapeutic use.**



RayBiotech, Inc.

3607 Parkway Lane suite 200
Norcross, GA 30092
Tel: 770-729-2992, 1-888-494-8555
Fax: 770-206-2393
Website: www.raybiotech.com
Email: info@raybiotech.com

Preparation

Immunogen was a recombinant protein derived from Human pro-BNP. This antibody was produced from a rabbit immunized with the immunogen. The IgG fraction was purified from rabbit serum followed by Protein A/G affinity chromatography.

Specificity

The rabbit anti-human natriuretic peptide B proprotein antibody detects specifically target derived from human recombinant protein as well as T98G cell lysates. Cross reactivity with mouse and rat pro-BNP was not tested yet.

Reconstitution

Supplied as lyophilized and purified antibody originally containing PBS, without **Preservative Stabilizers**, liking Sodium Azide. *It final concentration is indicated in shipping vial. Please avoid freeze-thaw cycles.*

The antibody is stable for at least years from the data of receipt when stored at -20°C to -70°C . Reconstituted antibody (suggesting with sterile PBS) can also be aliquotted and stored frozen at -20°C to -70°C in a manual defrost freezer for months without detectable loss activity. Upon reconstitution, the antibody can be stored at 4°C for 1 month.

Storage

Store at -20°C , if not intended for use within a month, keep it at 4°C and minimize freezing and thawing when use.

Related products

1. Mouse Anti-proBNP, N-terminal (Cat# MD-17-0034)
2. Human proBNP, N-terminal Recombinant protein. (Cat# 230-00009)

Reference

Dan L. Crimmins and Jeffrey L.-H. Kao, (2008) A glycosylated form of the human cardiac hormone pro B-type natriuretic peptide is an intrinsically unstructured monomeric protein. *Arch Biochem Biophys.* 1;475(1): 36–41.

**The products are furnished for LABORATORY RESEARCH USE ONLY.
Not for diagnostic or therapeutic use.**