



RayBiotech, Inc.

3607 Parkway Lane suite 200
Norcross, GA 30092
Tel: 770-729-2992, 1-888-494-8555
Fax: 770-206-2393
Website: www.raybiotech.com
Email: info@raybiotech.com

Certificate of Analysis and Data Sheet

Rabbit anti- Matrix Metalloproteinase 1 (MMP1) antibody

Catalog No:
130-10016

Isotype:
Rabbit Ig G

Speceis:
Human

Accession No:
P03956

Description

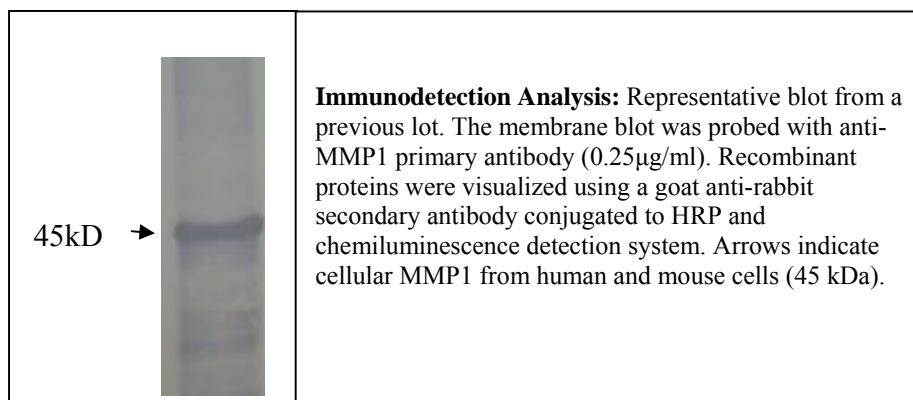
MMP-1 is a member of the large family of matrix metalloproteinase (MMP) that degrades substrates, such as gelatin, nidogen, collagen type 3, collagen type 4, laminin-1, proteoglycans, elastin, etc. Most MMP proteins are activated after cleaved by extracellular proteinases. The matrix metalloproteinase (MMP) family are involved in the breakdown of extracellular matrix in normal physiological pathway: embryonic development, reproduction, tissue remodeling. MMP also involves in disease processes, such as arthritis and metastasis.

Applications

Summary of antibody applications and working conditions

Options / Functions	YES	NO	Not determined	Recommended Work dilution or concentration
ELISA	*			1:160000(at least detecting 6.25ng/ml)
Western Blotting	*			1:1000-5000(at least)
Enzyme Immunoassay(EIA)			#	

Note: Other applications are not tested yet. Optimal dilutions should be determined by each laboratory for each application



**The products are furnished for LABORATORY RESEARCH USE ONLY.
Not for diagnostic or therapeutic use.**



RayBiotech, Inc.

3607 Parkway Lane suite 200
Norcross, GA 30092
Tel: 770-729-2992, 1-888-494-8555
Fax: 770-206-2393
Website: www.raybiotech.com
Email: info@raybiotech.com

Preparation

Immunogen was a partial length of recombinant protein of human Matrix Metalloproteinase 1. This antibody was produced from a rabbit immunized with the immunogen. The IgG fraction was purified from rabbit serum by ammonium sulphate precipitation, and followed by Protein A/G affinity chromatography.

Specificity

The rabbit anti-matrix metalloproteinase 1 antibody specifically detected target derived from human recombinant protein as well as selected cell lysates. Cross reactivity with mouse and rat MMP1 was not tested yet.

Reconstitution

Supplied as 100 µg of purified and lyophilized antibody. The antibody is stable for at least one year from the data of receipt when stored at -20°C to -70°C. Reconstituted antibody (suggesting with sterile PBS) can also be aliquotted and stored at -20°C to -70°C in a manual defrost freezer for years without losing detectable activity. Upon reconstitution, the antibody can be stored at 4°C for months. If 1 ml of PBS is used, the antibody concentration will be 100 µg/ml. **Please avoid freeze-thaw cycles.**

Storage

Store at -20°C, if not intended for use within a month, keep it at 4°C and *minimize freezing and thawing when use.*

Related products

1. MMP-1 ELISA Kit (Cat# ELH-MMP1-001)
2. MMP-1 ELISA Kit (for Lysates) (Cat# ELH-MMP1-001C)
3. Matrix metalloproteinase 1 (interstitial collagenase) (Cat# RB-15-0006P-3)

Reference

1. Tolboom, TC, et al. (2002) Invasive properties of fibroblast-like synoviocytes: correlation with growth characteristics and expression of MMP-1, MMP-3, and MMP-10. *Annals of the Rheumatic Diseases* 61(11): 975-980.

**The products are furnished for LABORATORY RESEARCH USE ONLY.
Not for diagnostic or therapeutic use.**