



RayBiotech, Inc.

3607 Parkway Lane suite 200
Norcross, GA 30092
Tel: 770-729-2992, 1-888-494-8555
Fax: 770-206-2393
Website: www.raybiotech.com
Email: info@raybiotech.com

Certificate of Analysis and Data Sheet

Rabbit anti- Matrix Metalloproteinase 7 (MMP7) antibody

Catalog No: 130-10017	Isotype: Rabbit Ig G	Species: Human	Accession No: P09237
---------------------------------	--------------------------------	--------------------------	--------------------------------

Description

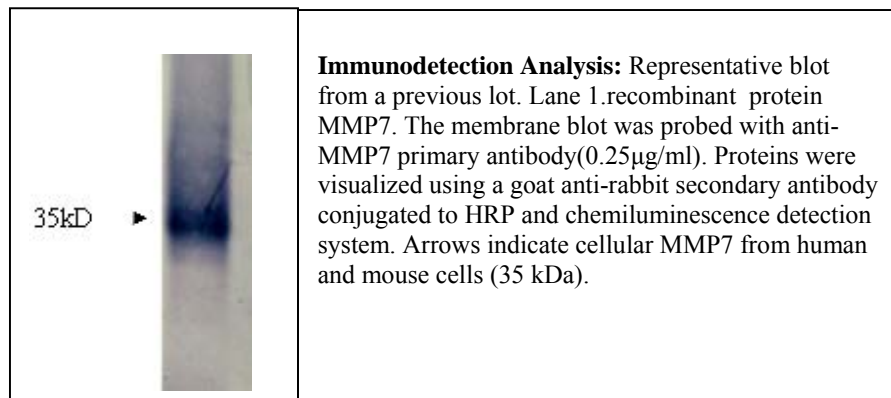
Matrix metalloproteinase 7, play an important role in the early steps of tumor progression with a molecular weight of 37.73 kDa, regulator of matrix remodeling, component of MMP cluster, matrilysin, stromelysin subclass of MMP, expressed in uterus, also expressed in Paneth cells (in mice), colocalizing and regulating DEFA5, generating angiostatin fragments by hydrolyzing plasminogen, overexpressed in 82% of colorectal, regulating by beta catenin/CF4 and important factor in early tumor growth progression and metastasis.

Applications

Summary of antibody applications and working conditions

Options / Functions	YES	NO	Not determined	Recommended Work dilution or concentration
ELISA	*			1:10000(at least detecting 100ng/ml)
Western Blotting	*			1:1000-5000(at least)
Enzyme Immunoassay(EIA)			#	

Note: Other applications are not tested yet. Optimal dilutions should be determined by each laboratory for each application



**The products are furnished for LABORATORY RESEARCH USE ONLY.
Not for diagnostic or therapeutic use.**



RayBiotech, Inc.

3607 Parkway Lane suite 200
Norcross, GA 30092
Tel: 770-729-2992, 1-888-494-8555
Fax: 770-206-2393
Website: www.raybiotech.com
Email: info@raybiotech.com

Preparation

Immunogen was a partial length of recombinant protein of human matrix metalloproteinase 7. This antibody was produced from a rabbit immunized with the immunogen. The IgG fraction was purified from rabbit serum by ammonium sulphate precipitation, and followed by Protein A/G affinity chromatography.

Specificity

The rabbit anti-matrix metalloproteinase 7 antibody specifically detects target derived from human recombinant protein as well as selected cell lysates. Cross reactivity with mouse and rat MMP7 was not tested yet.

Reconstitution

Supplied as lyophilized and purified antibody originally containing PBS, without **Preservative Stabilizers**, liking Sodium Azide. ***It final concentration is indicated in shipping vial.*** **Please avoid freeze-thaw cycles.**

The antibody is stable for at least years from the data of receipt when stored at -20°C to -70°C . Reconstituted antibody (suggesting with sterile PBS) can also be aliquotted and stored frozen at -20°C to -70°C in a manual defrost freezer for months without detectable loss activity. Upon reconstitution, the antibody can be stored at 4°C for 1 month.

Storage

Store at -20°C , if not intended for use within a month, keep it at 4°C and ***minimize freezing and thawing when use.***

Related products

1. Human MMP-7 ELISA Kit available on For Cell Culture Supernatant (Cat# ELH-MMP7-001)
2. Matrix metalloproteinase 7 (matrilysin, uterine) (Cat#RB-15-0007P-3)

Reference

Ivan O Rosas, et al., (2008) MMP1 and MMP7 as potential peripheral blood biomarkers in idiopathic pulmonary fibrosis. *PLoS Med.* 5(4): e93
Tolboom, TC, et al. (2002) Invasive properties of fibroblast-like synoviocytes: correlation with growth characteristics and expression of MMP-7, MMP-3, and MMP-70. *Annals of the Rheumatic Diseases* 61(11): 975-980.

**The products are furnished for LABORATORY RESEARCH USE ONLY.
Not for diagnostic or therapeutic use.**