

RayBiotech, Inc.

3607 Parkway Lane suite 100
Norcross, GA 30092
Tel: 770-729-2992, 1-888-494-8555
Fax: 770-206-2393
Website: www.raybiotech.com
Email: info@raybiotech.com

Certificate of Analysis and Data Sheet

Rabbit Anti-Human MSLN Antibody

Catalog No: 130-10064	Isotype: Rabbit IgG	Species: Human	Accession No: Q13421
---------------------------------	-------------------------------	--------------------------	--------------------------------

Description

Mesothelin (MSLN) may play an important role in cellular adhesion. It presents on normal mesothelial cells lining the pleura, peritoneum and pericardium. Since mesothelin is overexpressed in some cancers such as mesothelioma and ovarian and pancreatic adenocarcinoma, it could be a potential tumor biomarker. Mesothelin is immunogenic, and it also may be the potential antigenic target of a therapeutic cancer vaccine.

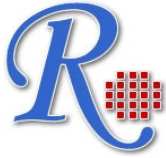
Applications

Summary of antibody applications and working conditions

Options / Functions	YES	NO	Not determined	Recommended work dilution
ELISA	*			1:160000
Western Blotting	*			1:1000
Enzyme Immunoassay(EIA)			*	
Immunohistology - paraffin			*	
Immunohistology - resin			*	
Immunoprecipitation			*	
Flow Cytometry			*	
Neutralization			*	

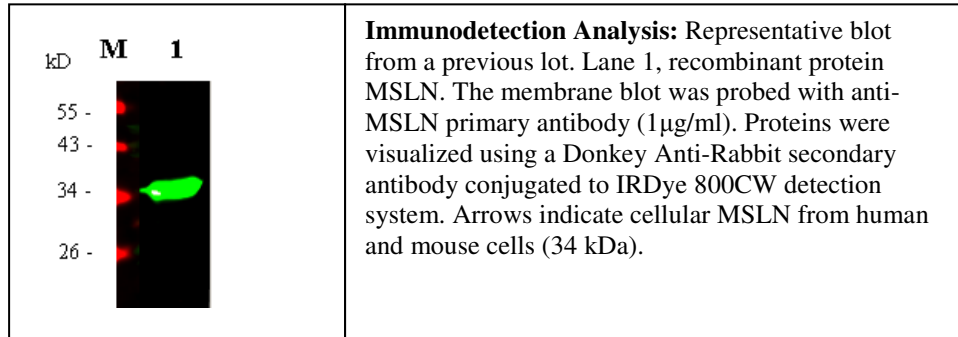
Note: Other applications are not tested yet. Optimal dilutions should be determined by each laboratory for each application

**The products are furnished for LABORATORY RESEARCH USE ONLY.
Not for diagnostic or therapeutic use.**



RayBiotech, Inc.

3607 Parkway Lane suite 100
Norcross, GA 30092
Tel: 770-729-2992, 1-888-494-8555
Fax: 770-206-2393
Website: www.raybiotech.com
Email: info@raybiotech.com



Preparation

The Immunogen was recombinant protein from Human MSLN. This antibody was produced from a rabbit immunized with the immunogen. The IgG fraction was purified from rabbit serum by ammonium sulphate precipitation followed by Protein A/G affinity chromatography.

Specificity

This antibody binds to Human MSLN. Cross reactivity with mouse and rat MSLN was not tested.

Reconstitution

Product is supplied as a powder obtained from lyophilization of purified antibody in PBS without preservatives. Reconstitute the antibody with sterile 1x PBS to a final concentration of 1 mg/ml.

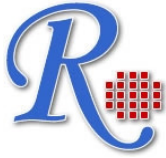
Storage

Store at 4°C if intended for use within one month, otherwise, store at -20°C to -80°C. The lyophilized antibody is stable for at least 18 months after the date of receipt when stored at -20°C to -80°C. After reconstitution, it can be aliquoted and stored frozen at -20°C to -80°C in a manual defrost freezer for at least 6 months without detectable loss of activity. Upon reconstitution, the antibody can also be stored for 1 month at 4°C. **Please avoid freeze-thaw cycles, as this will lower the activity of the antibody.**

Related products

1. Recombinant Human Mesothelin / Megakaryocyte-Potentiating Factor (catalog#: 230-00043).

**The products are furnished for LABORATORY RESEARCH USE ONLY.
Not for diagnostic or therapeutic use.**



RayBiotech, Inc.

3607 Parkway Lane suite 100
Norcross, GA 30092
Tel: 770-729-2992, 1-888-494-8555
Fax: 770-206-2393
Website: www.raybiotech.com
Email: info@raybiotech.com

Reference

Onda M, et al.. (2006) Megakaryocyte potentiation factor cleaved from mesothelin precursor is a useful tumor marker in the serum of patients with mesothelioma. Clin Cancer Res. 12:4225-31.

Ho M, et al.. (2005) Humoral immune response to mesothelin in mesothelioma and ovarian cancer patients. Clin Cancer Res. 11(10):3814-20.

**The products are furnished for LABORATORY RESEARCH USE ONLY.
Not for diagnostic or therapeutic use.**