



RayBiotech, Inc.

3607 Parkway Lane suite 100
Norcross, GA 30092
Tel: 770-729-2992, 1-888-494-8555
Fax: 770-206-2393
Website: www.raybiotech.com
Email: info@raybiotech.com

Certificate of Analysis and Data Sheet

Rabbit Anti-Human MB Antibody

Catalog No: 130-10068	Isotype: Rabbit IgG	Species: Human	Accession No: P02144
---------------------------------	-------------------------------	--------------------------	--------------------------------

Description

Myoglobin (MB) is an iron- and oxygen-binding protein found in the muscle tissue of vertebrates and almost all mammals. Myoglobin is a single-chain globular protein containing a heme (iron containing porphyrin) prosthetic group in the center. The oxygen binding of myoglobin is unaffected by the oxygen pressure in the surrounding tissue. The only releasing time of myoglobin in the bloodstream happens after muscle injury. If myoglobin presents in blood, it will be considered to be abnormal.

Applications

Summary of antibody applications and working conditions

Options / Functions	YES	NO	Not determined	Recommended work dilution
ELISA	*			1:80000
Western Blotting	*			1:1000
Enzyme Immunoassay(EIA)			*	
Immunohistology - paraffin			*	
Immunohistology - resin			*	
Immunoprecipitation			*	
Flow Cytometry			*	
Neutralization			*	

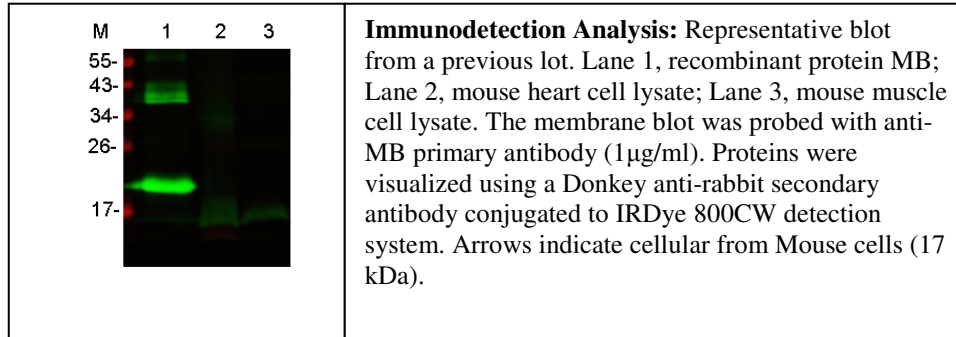
Note: Other applications are not tested yet. Optimal dilutions should be determined by each laboratory for each application

**The products are furnished for LABORATORY RESEARCH USE ONLY.
Not for diagnostic or therapeutic use.**



RayBiotech, Inc.

3607 Parkway Lane suite 100
Norcross, GA 30092
Tel: 770-729-2992, 1-888-494-8555
Fax: 770-206-2393
Website: www.raybiotech.com
Email: info@raybiotech.com



Preparation

Immunogen was recombinant protein derived from human MB. This antibody was produced from a rabbit immunized with the immunogen. The IgG fraction was purified from rabbit serum followed by Protein A/G affinity chromatography.

Specificity

This antibody binds to Human Myoglobin. Cross reactivity with rat are expected from sequence similarity.

Reconstitution

Product is supplied as a powder obtained from lyophilization of purified antibody in PBS without preservatives. Reconstitute the antibody with sterile 1x PBS to a final concentration of 1 mg/ml.

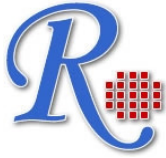
Storage

Store at 4°C if intended for use within one month, otherwise, store at -20°C to -80°C. The lyophilized antibody is stable for at least 18 months after the date of receipt when stored at -20°C to -80°C. After reconstitution, it can be aliquoted and stored frozen at -20°C to -80°C in a manual defrost freezer for at least 6 months without detectable loss of activity. Upon reconstitution, the antibody can also be stored for 1 month at 4°C. **Please avoid freeze-thaw cycles, as this will lower the activity of the antibody.**

Related products

1. Recombinant Human Myoglobin (catalog #: 230-00032)
2. Mouse Anti-Myoglobin Cardiac (catalog #: MD-17-0070)

**The products are furnished for LABORATORY RESEARCH USE ONLY.
Not for diagnostic or therapeutic use.**



RayBiotech, Inc.

3607 Parkway Lane suite 100
Norcross, GA 30092
Tel: 770-729-2992, 1-888-494-8555
Fax: 770-206-2393
Website: www.raybiotech.com
Email: info@raybiotech.com

Reference

Flonta SE, et al. (2009) Expression and functional regulation of myoglobin in epithelial cancers. Am J Pathol. 175(1):201-6.

Weber MA, et al. (2007) Myoglobin plasma level related to muscle mass and fiber composition: a clinical marker of muscle wasting? J Mol Med (Berl). 85(8):887-96.

**The products are furnished for LABORATORY RESEARCH USE ONLY.
Not for diagnostic or therapeutic use.**