



## RayBiotech, Inc.

The protein array pioneer company

[www.Raybiotech.com](http://www.Raybiotech.com)

3607 Parkway Lane, Suite 200,  
Norcross, GA 30092

Tel: 770-729-2992, 1-888-494-8555

Fax: 770-206-2393

E-mail: [info@raybiotech.com](mailto:info@raybiotech.com)

---

## Certificate of Analysis and Data Sheet

### Recombinant Human Serpine A1

[Product Catalog # 230-00209](#)

#### **Synonyms**

Alpha-1-antitrypsin, Alpha-1 protease inhibitor, Alpha -1 -antiproteinase, Serpin A1.

#### **Source**

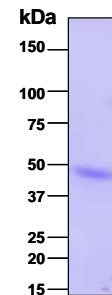
- *Escherichia coli* derived.
- Protein Accession #. NP\_000286 (Glu25-Lys418).

#### **Predicted Molecular Mass**

~ 47 kDa.

#### **Purity**

>95%, determined by SDS-PAGE under reducing conditions and visualized by Commassie blue staining (See the image above).



#### **Formulation**

Lyophilized from a 0.2  $\mu$ m filtered solution in PBS (pH 7.4) containing 1% sucrose. Protein concentration prior to lyophilization was 139  $\mu$ g/mL.

#### **Reconstitution**

Briefly spin the vial prior to opening and bring the contents to the bottom. It is recommended to reconstitute at 150  $\mu$ g/mL with sterile deionized water.

#### **Stability & Storage**

- Upon arrival, the lyophilized products may be stored for 2 weeks at 2 to 8  $^{\circ}$ C. For long term storage, it is recommended to be stored desiccated below -20  $^{\circ}$ C in a manual defrost freezer.
- Following reconstitution, the protein may be stored for 2 weeks at 2 to 8  $^{\circ}$ C. For long term storage, it is recommended to add a carrier protein (0.1% HSA or BSA) and store at -20  $^{\circ}$ C or -80  $^{\circ}$ C in aliquots. **\*Avoid repeated freeze-thaw cycles.**

---

**The products are furnished for LABORATORY RESEARCH USE ONLY.  
Not for therapeutic use.**