

RayBiotech, Inc.

The protein array pioneer company

www.Raybiotech.com

3607 Parkway Lane, Suite 100,
Norcross, GA 30092

Tel: 770-729-2992, 1-888-494-
8555

Fax: 770-206-2393

Certificate of Analysis and Data Sheet

Recombinant Human Insulin-like Growth Factor II Product Catalog # 230-00234

Synonyms

Insulin-like growth factor type 2, IGF2, IGF-II.

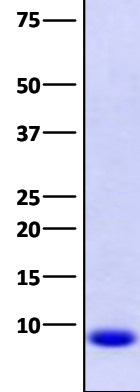
Source

- *Escherichia coli* derived.
- Protein accession #: AAH00531, Ala25 - Glu91.
- Containing an *N*-terminal 6× histidine tag.

Predicted Molecular Mass

~ 7.5 kDa.

kDa



Purity

>95%, determined by SDS-PAGE under reducing conditions and visualized by Coomassie blue staining (see the image above).

Formulation

Lyophilized from a 0.2 µm filtered solution in PBS. Protein concentration prior to lyophilization was 1.1 mg/mL.

Reconstitution

Briefly spin the vial and bring the contents to the bottom prior to opening. It is recommended to reconstitute at 0.5 -1.0 mg/mL with sterile deionized water.

Stability & Storage

- Upon arrival, the lyophilized products may be stored for 2 weeks at 2 to 8 °C. For long term storage, it is recommended to be stored desiccated below -20 °C in a manual defrost freezer.
- Following reconstitution, the protein may be stored for 2 weeks at 2 to 8 °C. For long term storage, it is recommended to add a carrier protein (0.1% HSA or BSA) and store at -20 °C or -80 °C in aliquots. **Avoid repeated freeze-thaw cycles.**

**The products are furnished for LABORATORY RESEARCH USE ONLY.
Not for therapeutic use.**