

RayBiotech, Inc.

The protein array pioneer company

www.Raybiotech.com

3607 Parkway Lane, Suite 100,
Norcross, GA 30092

Tel: 770-729-2992, 1-888-494-8555

Fax: 770-206-2393

E-mail: info@raybiotech.com

Certificate of Analysis and Data Sheet

Recombinant Human C-ets-1

[Product Catalog # 230-00235](#)

Synonyms

Protein C-ets-1, v-ets erythroblastosis virus E26 oncogene homolog 1 (avian), P54.

Source

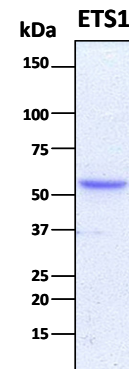
- *Escherichia coli* derived.
- Protein accession #: P14921, Lys2 - Glu441.
- Containing an *N*-terminal 6× histidine tag.

Predicted Molecular Mass

~ 50 kDa.

Purity

>95%, determined by SDS-PAGE under reducing conditions and visualized by Commassie blue staining (*see the image above*).



Formulation

Liquid, clear solution. Supplied as a 0.2 μ m filtered solution in 40 mM Tris-HCl, 50 mM NaCl (pH 8.5).

Concentration

Lot specific (*see the label on the vial*).

Stability & Storage

Upon arrival, the protein may be stored for two weeks at 2 to 8 °C. For long term storage, it is recommended to add a carrier protein (0.1% HSA or BSA) and store at -20 °C or -80 °C in aliquots. **Avoid repeated freeze-thaw cycles.**

**The products are furnished for LABORATORY RESEARCH USE ONLY.
Not for therapeutic use.**