

SSEA-1 Antibody (Clone MC-480)

CATALOG #:	3063-25	25 µg
HOST:	Mouse	
ISOTYPE:	Mouse IgM	
CLONE#	MC-480	
PURIFICATION:	Affinity purified	
IMMUNOGEN:	F9 teratocarcinoma stem cells (X-irradiated)	
SPECIES REACTIVITY:	Human, Mouse	

ANTIBODY FORMULATION:

25 µg in 50 µl of PBS containing 0.05% BSA and 0.05% Sodium Azide.

STORAGE CONDITIONS:

Store at -20°C. Avoid repeated freeze/thaw cycles.

DESCRIPTION:

Stage-Specific Embryonic Antigen-1 (SSEA-1), also referred to as Lewis X (LeX), is expressed on murine and human germ cells, murine embryonic stem (ES) cells and murine embryonal carcinoma (EC) cells. Expression levels differ between mouse and human with decreasing expression upon differentiation in mice and increased expression upon differentiation in humans.

APPLICATIONS :

Flow(Cell Surface): 0.25 µg/10⁶ cells

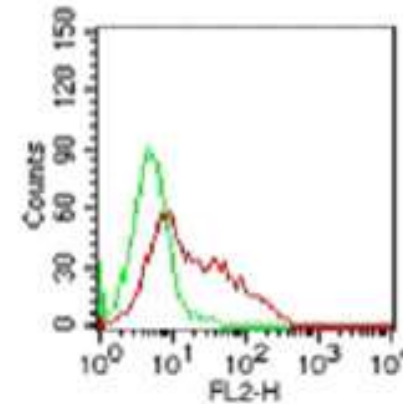
IF/ICC: reported in literature

IHC: reported in literature

IP: reported in literature

REFERENCES:

1. Anjos-Afonso and Bonnet D. Blood. Feb 1;109(3):1298-306 (2007)
2. Cui, L., et al., J. Histochem. Cytochem. 52: 1447 (2004)
3. Fenderson BA, et al. Methods Mol Biol; 325:207-24 (2006)
4. Harris, J.F., et al., J. Immunol. 132: 2502 (1984)
5. Solter, D. and Knowles, B.B., Proc. Natl. Acad. Sci. USA. 75: 5565 (1978)



Cell surface staining of 10⁶ F9 cells using 0.25 µg of 3063-25. Green represents isotype control; red represents anti-SSEA-1 antibody; a PE-conjugated rat anti-mouse IgM secondary was used for this test (cells were not fixed for testing).

RELATED PRODUCTS:

- SSEA-4 Monoclonal Antibody (Cat. No. 3074-25)
- SSEA-3 Monoclonal Antibody (Cat. No. 3065-25)
- TRA-1-60 Monoclonal Antibody (Cat. No. 3079-25)
- TRA-1-81 Monoclonal Antibody (Cat. No. 3082-25)

FOR RESEARCH USE ONLY! Not to be used in human subjects!