

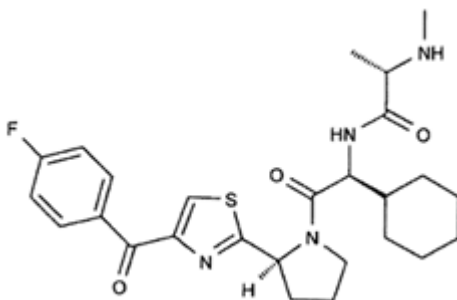


Certificate of Analysis

LCL-161

Product: (S)-N-((S)-1-Cyclohexyl-2-((S)-2-[4-(4-fluorobenzoyl)thiazol-2-yl]pyrrolidin-1-yl)-2-oxoethyl)-2-methylamino-propionamide

Chemical Structure:



CAT#: A-1147
Formula: C₂₆H₃₃FN₄O₃S
M.W.: 500.23
CAS No.: 1005342-46-0
¹H- and ¹³C-NMR: Consistent with assigned structure
Purity: 99% by HPLC
Solubility: Soluble in DMSO
Storage: Room temperature, or -20°C for 3 years

Note: The material is for research purposes only, not for human use.