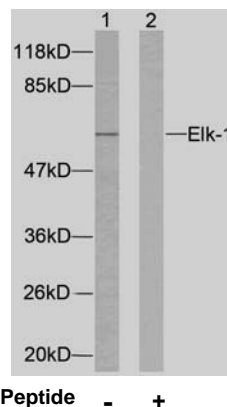




11 Park Drive, Suite 12
Boston, MA 02215

Rabbit anti Elk-1 (Ab-383)

- Catalog Number:** AP21004
Amount: 100µl (for 10 Western Blotting)
Form of Antibody: Rabbit IgG in phosphate buffered saline (without Mg²⁺ and Ca²⁺), pH 7.4, 150mM NaCl, 0.02% sodium azide and 50% glycerol.
Storage/Stability: Store at -20°C/1 year
Immunogen: The antiserum was produced against synthesized non-phosphopeptide derived from human Elk-1 around the phosphorylation site of serine 383 (T-L-S^P-P-I).
Purification: The antibody was affinity-purified from rabbit antiserum by affinity-chromatography using epitope-specific immunogen.
Specificity/Sensitivity: Elk-1(Ab-383) antibody detects endogenous levels of total Elk-1 protein.
Reactivity: Human, Mouse, Rat
Applications: WB: 1:1000
Swiss-Prot No. : P19419
References: Xing J, et al. (1996) Science. 273(5277): 959-963.
Janknecht R, et al. (1993) EMBO J. 12(13): 5097-5104.
Marais R, et al. (1993) Cell 73: 381-393.
Kortenjann M, et al. (1994) Mol Cell Biol. 14: 4815-4824.
Cavigelli M, et al. (1995) EMBO J. 14: 5957-5964.
Whitmarsh A J, et al. (1995) Science. 269:403-407.



Western blot analysis of extracts from HeLa cells using Elk-1(Ab-383) Antibody (AP21004).

For Research Use Only

Contact & Ordering Information: Angio-Proteomie, 11 Park Drive, Suite 12, Boston, MA 02215, USA. Fax: (480) 247-4337, angioproteomie@gmail.com