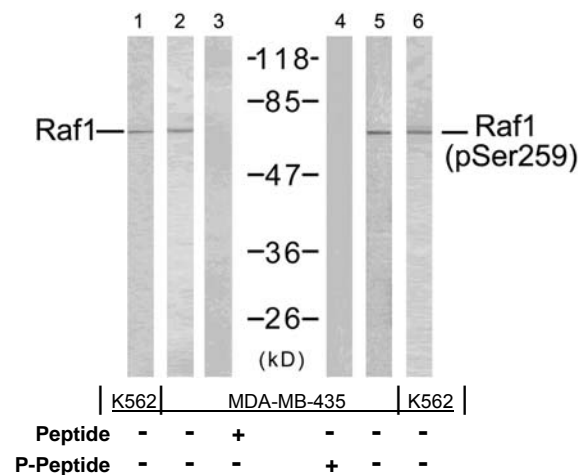




11 Park Drive, Suite 12  
Boston, MA 02215

## Rabbit anti Raf-1 (Ab-259)

- Catalog Number:** AP21006  
**Amount:** 100µl (10 Western Blotting)  
**Form of Antibody:** Rabbit IgG in phosphate buffered saline (without Mg<sup>2+</sup> and Ca<sup>2+</sup>), pH 7.4, 150mM NaCl, 0.02% sodium azide and 50% glycerol.  
**Storage/Stability:** Store at -20°C/1 year  
**Immunogen:** The antiserum was produced against synthesized non-phosphopeptide derived from human Raf-1 around the phosphorylation site of serine 259 (S-T-S<sup>P</sup>-T-P).  
**Purification:** The antibody was affinity-purified from rabbit antiserum by affinity-chromatography using epitope-specific immunogen.  
**Specificity/Sensitivity:** Raf-1 (Ab-259) antibody detects endogenous levels of total Raf-1 protein.  
**Reactivity:** Human, Mouse, Rat  
**Applications:** WB: 1:1000  
**Swiss-Prot No. :** P04049  
**References:** Dougherty M K, et al. (2005) Mol Cell. 17(2): 215-224.  
Hekman M, et al. (2005) FEBS Lett. 579(2): 464-468.  
Avruch J, et al. (1994) Trends Biochem. Sci. 19, 279-283.  
Chong H, et al. (2001) EMBO J. 20, 3716-3727.  
King A J, et al. (1998) Nature. 396:180-183.  
Fabian J R, et al. (1993) Mol Cell Biol. 13: 7170-7179.



Western blot analysis of extracts using Raf-1 (Ab-259) antibody (AP21006, Line 1, 2, and 3) and Raf-1 (phospho- Ser259) antibody (pAP11006, Line 4, 5, and 6).

**For Research Use Only**

Contact & Ordering Information: Angio-Proteomie, 11 Park Drive, Suite 12, Boston, MA 02215, USA. Fax: (480) 247-4337, [angioproteomie@gmail.com](mailto:angioproteomie@gmail.com)