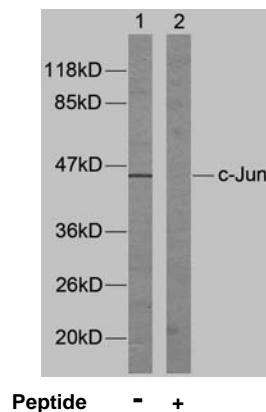


## Rabbit anti c-Jun (Ab-170)

- Catalog Number:** AP21023  
**Amount:** 100µl (For 10 Western Blotting)  
**Form of Antibody:** Rabbit IgG in phosphate buffered saline (without Mg<sup>2+</sup> and Ca<sup>2+</sup>), pH 7.4, 150mM NaCl, 0.02% sodium azide and 50% glycerol.  
**Storage/Stability:** Store at -20°C/1 year  
**Immunogen:** The antiserum was produced against synthesized non-phosphopeptide derived from human c-Jun around the phosphorylation site of tyrosine 170 (P-V-Y<sup>P</sup>-A-N).  
**Purification:** The antibody was affinity-purified from rabbit antiserum by affinity-chromatography using epitope-specific immunogen.  
**Specificity/Sensitivity:** c-Jun (Ab-170) antibody detects endogenous levels of c-Jun protein around tyrosine 170.  
**Reactivity:** Human, Mouse, Rat  
**Applications:** WB: 1:1000  
**Swiss-Prot No. :** P05412  
**References:** Barila D, et al. (2000) EMBO J.19 (2): 273-281.  
Binetruy B, et al. (1991) Nature. 351: 122-127.  
Smeal T, et al. (1991) Nature. 354:494-496.  
Derijard B, et al. (1994) Cell. 76:1025-1037.  
Kyriakis J M, et al. (1994) Nature. 369: 156-160.



Western blot analysis of extracts from HeLa cells using c-Jun (Ab-170) antibody (AP21023).

**For Research Use Only**

Contact & Ordering Information: Angio-Proteomie, 11 Park Drive, Suite 12, Boston, MA 02215, USA. Fax: (480) 247-4337, [angioproteomie@gmail.com](mailto:angioproteomie@gmail.com)