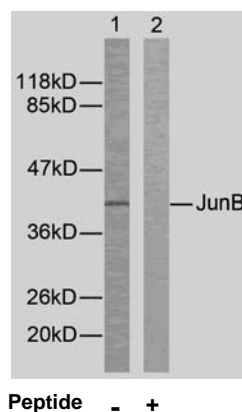




11 Park Drive, Suite 12
Boston, MA 02215

Rabbit anti Jun B (Ab-259)

- Catalog Number:** AP21027
Amount: 100µl (For 10 Western Blotting)
Form of Antibody: Rabbit IgG in phosphate buffered saline (without Mg²⁺ and Ca²⁺), pH 7.4, 150mM NaCl, 0.02% sodium azide and 50% glycerol.
Storage/Stability: Store at -20°C/1 year
Immunogen: The antiserum was produced against synthesized non-phosphopeptide derived from human JunB around the phosphorylation site of serine 259 (P-V-S^P-P-I).
Purification: The antibody was affinity-purified from rabbit antiserum by affinity-chromatography using epitope-specific immunogen.
Specificity/Sensitivity: JunB (Ab-259) antibody detects endogenous levels of total JunB protein.
Reactivity: Human, Mouse, Rat
Applications: WB: 1:1000
Swiss-Prot No. : P17275
References: Beausoleil S A, et al. (2004) Proc Natl Acad Sci U S A. 101(33): 12130-12135.



Western blot analysis of extracts from HeLa cells using JunB (Ab-259) antibody (AP21027).

For Research Use Only

Contact & Ordering Information: Angio-Proteomie, 11 Park Drive, Suite 12, Boston, MA 02215, USA. Fax: (480) 247-4337, angioproteomie@gmail.com