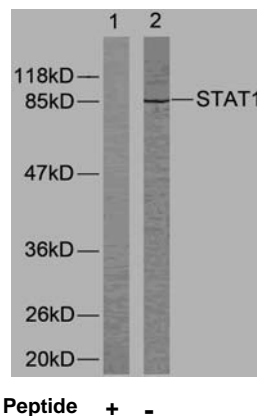


Rabbit anti STAT1 (Ab-701)

- Catalog Number:** AP21044
Amount: 100µl (For 10 Western Blotting)
Form of Antibody: Rabbit IgG in phosphate buffered saline (without Mg²⁺ and Ca²⁺), pH 7.4, 150mM NaCl, 0.02% sodium azide and 50% glycerol.
Storage/Stability: Store at -20°C/1 year
Immunogen: The antiserum was produced against synthesized non-phosphopeptide derived from human STAT1 around the phosphorylation site of tyrosine 701(T-G-Y^P-I-K).
Purification: The antibody was affinity-purified from rabbit antiserum by affinity-chromatography using epitope-specific immunogen.
Specificity/Sensitivity: STAT1 (Ab-701) antibody detects endogenous levels of total STAT1 protein.
Reactivity: Human, Mouse, Rat
Applications: WB: 1:1000
Swiss-Prot No. : P42224
References: Heim M H, (1999) J Recept Signal Transduct Res. 19: 75-120.
Durbin J E, et al. (1996) Cell. 84: 443-450.
Meraz M A, et al. (1996) Cell. 84: 431-442.
Wakao H, et al. (1994) EMBO J. 13: 2182-2191.
Demoulin J, B. et al. (1999) J Biol Chem. 274: 25855-258
Ihle J N, et al. (1994) Trends Biochem Sci. 19: 222-227.



Western blot analysis of extracts from COLO205 cells using STAT1 (Ab-701) antibody (AP21044).

For Research Use Only

Contact & Ordering Information: Angio-Proteomie, 11 Park Drive, Suite 12, Boston, MA 02215, USA. Fax: (480) 247-4337, angioproteomie@gmail.com