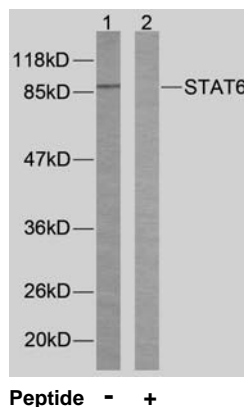


Rabbit anti STAT6 (Ab-645)

- Catalog Number:** AP21051
Amount: 100µl (For 10 Western Blotting)
Form of Antibody: Rabbit IgG in phosphate buffered saline (without Mg²⁺ and Ca²⁺), pH 7.4, 150mM NaCl, 0.02% sodium azide and 50% glycerol.
Storage/Stability: Store at -20°C/1 year
Immunogen: The antiserum was produced against synthesized non-phosphopeptide derived from human STAT6 around the phosphorylation site of threonine 645 (P-A-T^P-I-K).
Purification: The antibody was affinity-purified from rabbit antiserum by affinity-chromatography using epitope-specific immunogen.
Specificity/Sensitivity: STAT6 (Ab-645) antibody detects endogenous levels of total STAT6 protein.
Reactivity: Human
Applications: WB: 1:1000
Swiss-Prot No. : P42226
References: Nelms K, et al. (1999) Annu Rev Immunol. 17:701-738.
Malabarba M G, et al. (1996) Biochem. J. 319:865-872.
Hou J, et al. (1994) Science. 265:1701-1706.
Quelle F W, et al. (1995) Mol Cell Biol. 15: 3336-3343.
Takeda K, et al. (1996) Nature. 380: 627-630.



Western blot analysis of extracts from HeLa cells using STAT6 (Ab-645) antibody (AP21051).

For Research Use Only

Contact & Ordering Information: Angio-Proteomie, 11 Park Drive, Suite 12, Boston, MA 02215, USA. Fax: (480) 247-4337, angioproteomie@gmail.com