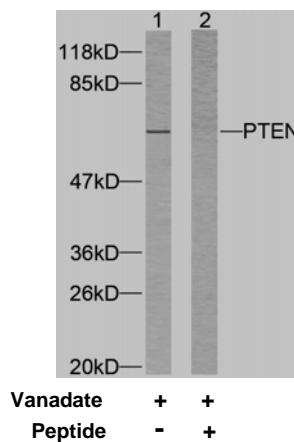




11 Park Drive, Suite 12
Boston, MA 02215

Rabbit anti PTEN (Ab-370)

- Catalog Number:** AP21057
Amount: 100µl (For 10 Western Blotting)
Form of Antibody: Rabbit IgG in phosphate buffered saline (without Mg²⁺ and Ca²⁺), pH 7.4, 150mM NaCl, 0.02% sodium azide and 50% glycerol.
Storage/Stability: Store at -20°C/1 year
Immunogen: This antiserum was produced against synthesized non-phosphopeptide derived from human PTEN around the phosphorylation site of serine 370 (D-V-S^P-D-N).
Purification: The antibody was affinity-purified from rabbit antiserum by affinity-chromatography using epitope-specific immunogen.
Specificity/Sensitivity: PTEN (Ab-370) antibody detects endogenous levels of total PTEN protein.
Reactivity: Human, Mouse, Rat
Applications: WB: 1:1000
Swiss-Prot No. : P60484
References: Al-Khouri AM, et al. (2005). J Biol Chem. 280 (42):35195-35202.
Miller SJ, et al. (2002). FEBS Lett. 528 (1-3): 145-153.
Torres J, et al. (2001). J Biol Chem. 276 (2): 993-998.
Vazquez F, et al. (2000). Mol Cell Biol. 20 (14): 5010-5018.



Western blot analysis of extracts from HeLa cells using PTEN (Ab-370) antibody (AP21057).

For Research Use Only

Contact & Ordering Information: Angio-Proteomie, 11 Park Drive, Suite 12, Boston, MA 02215, USA. Fax: (480) 247-4337, angioproteomie@gmail.com