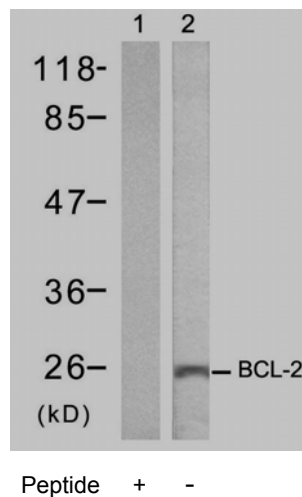


## Rabbit anti BCL-2 (Ab-70)

- Catalog Number:** AP21060  
**Amount:** 100µl (For 10 Western Blotting)  
**Form of Antibody:** Rabbit IgG in phosphate buffered saline (without Mg<sup>2+</sup> and Ca<sup>2+</sup>), pH 7.4, 150mM NaCl, 0.02% sodium azide and 50% glycerol.  
**Storage/Stability:** Store at -20°C/1 year  
**Immunogen:** The antiserum was produced against synthesized non-phosphopeptide derived from human BCL-2 around the phosphorylation site of serine 70 (R-T-S<sup>P</sup>-P-L).  
**Purification:** The antibody was affinity-purified from rabbit antiserum by affinity-chromatography using epitope-specific immunogen.  
**Specificity/Sensitivity:** BCL-2 (Ab-70) antibody detects endogenous levels of total BCL-2 protein.  
**Reactivity:** Human  
**Applications:** WB: 1:1000  
**Swiss-Prot No. :** P10415  
**References:** Muller IM, et al. (2005) Mol Pharmacol.  
Jin Z, Gao F, et al. J Biol Chem 2004 Sep 17; 279(38): 40209-19.  
Kumar Biswas S, et al. Mol Cancer Ther 2004 Mar; 3(3): 327-34.  
Huang ST, et al. (2002)FASEB J; 16(8): 825-32.  
Yamamoto K, et al. (1999) Mol Cell Biol; 19(12): 8469-78.



Western blot analysis of extracts from MCF7 cells using BCL-2 (Ab-70) antibody (AP21060).

### For Research Use Only

Contact & Ordering Information: Angio-Proteomie, 11 Park Drive, Suite 12, Boston, MA 02215, USA. Fax: (480) 247-4337, [angioproteomie@gmail.com](mailto:angioproteomie@gmail.com)