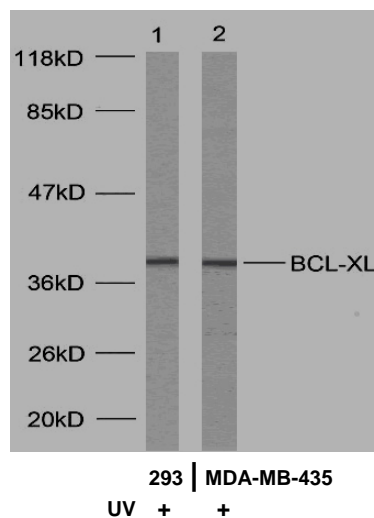


## Rabbit anti BCL-XL (Ab-62)

- Catalog Number:** AP21061  
**Amount:** 100µl (For 10 Western Blotting)  
**Form of Antibody:** Rabbit IgG in phosphate buffered saline (without Mg<sup>2+</sup> and Ca<sup>2+</sup>), pH 7.4, 150mM NaCl, 0.02% sodium azide and 50% glycerol.  
**Storage/Stability:** Store at -20°C/1 year  
**Immunogen:** The antiserum was produced against synthesized non-phosphopeptide derived from human BCL-XL around the phosphorylation site of serine 62 (A-D-S<sup>P</sup>-P-A).  
**Purification:** The antibody was affinity-purified from rabbit antiserum by affinity-chromatography using epitope-specific immunogen.  
**Specificity/Sensitivity:** BCL-XL (Ab-62) antibody detects endogenous levels of total BCL-XL protein.  
**Reactivity:** Human, Mouse, Rat  
**Applications:** WB: 1:1000  
**Swiss-Prot No. :** Q07817  
**References:** Basu A, et.al.( 2003) Mar 13; 538(1-3): 41-7  
Cheng E.H.-Y. et.al. (1996) Nature 379:554-556.  
Sattler M. et.al. (1997), Science 275:983-986.  
Muchmore S.W.et.al (1996).Nature 381:335-341  
Yu J., Zhang L. Mol. (2001)Cell 7:673-682



Western blot analysis using BCL-XL (Ab-62) antibody (AP21061).

**For Research Use Only**

Contact & Ordering Information: Angio-Proteomie, 11 Park Drive, Suite 12, Boston, MA 02215, USA. Fax: (480) 247-4337, [angioproteomie@gmail.com](mailto:angioproteomie@gmail.com)