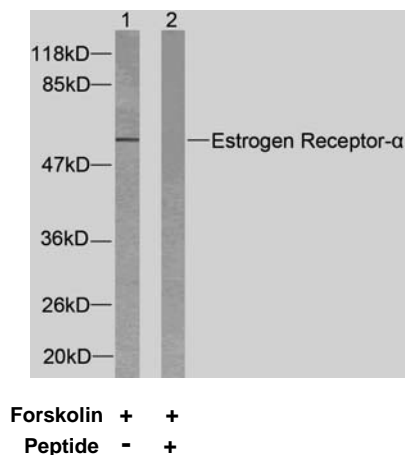


## Rabbit anti Estrogen Receptor- $\alpha$ (Ab-104)

- Catalog Number:** AP21065  
**Amount:** 100 $\mu$ l (For 10 Western Blotting)  
**Form of Antibody:** Rabbit IgG in phosphate buffered saline (without Mg<sup>2+</sup> and Ca<sup>2+</sup>), pH 7.4, 150mM NaCl, 0.02% sodium azide and 50% glycerol.  
**Storage/Stability:** Store at -20°C/1 year  
**Immunogen:** The antiserum was produced against synthesized non-phosphopeptide derived from human Estrogen Receptor- $\alpha$  around the phosphorylation site of serine 104 (S-V-S<sup>P</sup>-P-S).  
**Purification:** The antibody was affinity-purified from rabbit antiserum by affinity-chromatography using epitope-specific immunogen.  
**Specificity/Sensitivity:** Estrogen Receptor- $\alpha$  (Ab-104) antibody detects endogenous levels of total Estrogen Receptor- $\alpha$  protein.  
**Reactivity:** Human, Mouse  
**Applications:** WB: 1:1000  
**Swiss-Prot No. :** P03372  
**References:** Medunjanin S, et al. (2005). J Biol Chem.80 (38):33006-33014.  
Dutertre M, et al. (2003). Mol Endocrinol.17 (7): 1296-1314.  
Chen D, et al. (2000). Mol Cell.6 (1): 127-137.  
Rogatsky I, et al. (1999). J Biol Chem.274 (32): 22296-22302.



Western blot analysis of extracts from 293 cells using Estrogen Receptor- $\alpha$  (Ab-104) antibody (AP21065).

**For Research Use Only**

Contact & Ordering Information: Angio-Proteomie, 11 Park Drive, Suite 12, Boston, MA 02215, USA. Fax: (480) 247-4337, [angioproteomie@gmail.com](mailto:angioproteomie@gmail.com)