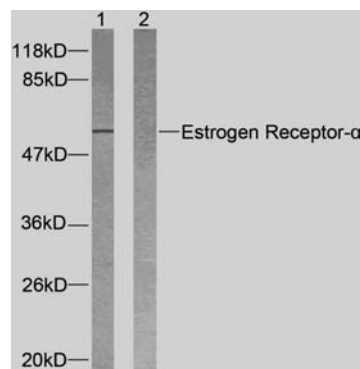




11 Park Drive, Suite 12
Boston, MA 02215

Rabbit anti Estrogen Receptor- α (Ab-118)

- Catalog Number:** AP21067
Amount: 100 μ l (For 10 Western Blotting)
Form of Antibody: Rabbit IgG in phosphate buffered saline (without Mg²⁺ and Ca²⁺), pH 7.4, 150mM NaCl, 0.02% sodium azide and 50% glycerol.
Storage/Stability: Store at -20°C/1 year
Immunogen: The antiserum was produced against synthesized non-phosphopeptide derived from human Estrogen Receptor- α around the phosphorylation site of serine118 (Q-L-S^P-P-F).
Purification: The antibody was affinity-purified from rabbit antiserum by affinity-chromatography using epitope-specific immunogen.
Specificity/Sensitivity: Estrogen Receptor- α (Ab-118) antibody detects endogenous levels of total Estrogen Receptor- α protein.
Reactivity: Human, Mouse
Applications: WB: 1:1000
Swiss-Prot No. : P03372
References: Medunjanin S, et al. (2005). J Biol Chem.80 (38):33006-33014.
Masuhiro Y, et al. (2005). Proc Natl Acad Sci USA.102 (23): 8126-8131.
Pentecost BT, et al. (2005). Mol Cell Endocrinol.238 (1-2): 9-25.
Park KJ, et al. (2005). Mol Cell.18 (1): 71-82.



Estradiol + +
Peptide - +

Western blot analysis of extracts from MCF7 cells using Estrogen Receptor- α (Ab-118) antibody (AP21067).

For Research Use Only

Contact & Ordering Information: Angio-Proteomie, 11 Park Drive, Suite 12, Boston, MA 02215, USA. Fax: (480) 247-4337, angioproteomie@gmail.com