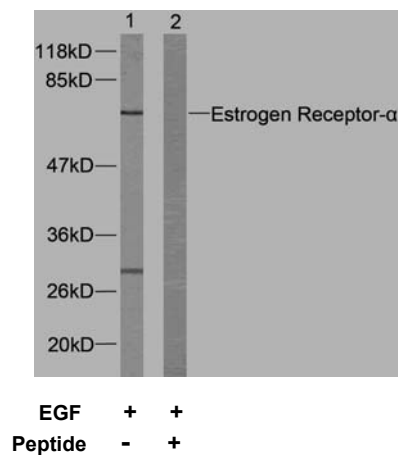




11 Park Drive, Suite 12
Boston, MA 02215

Rabbit anti Estrogen Receptor- α (Ab-167)

- Catalog Number:** AP21068
Amount: 100 μ l (For 10 Western Blotting)
Form of Antibody: Rabbit IgG in phosphate buffered saline (without Mg²⁺ and Ca²⁺), pH 7.4, 150mM NaCl, 0.02% sodium azide and 50% glycerol.
Storage/Stability: Store at -20°C/1 year
Immunogen: The antiserum was produced against synthesized non-phosphopeptide derived from human Estrogen Receptor- α around the phosphorylation site of serine167 (L-A-S^P-T-N).
Purification: The antibody was affinity-purified from rabbit antiserum by affinity-chromatography using epitope-specific immunogen.
Specificity/Sensitivity: Estrogen Receptor- α (Ab-167) antibody detects endogenous levels of total Estrogen Receptor- α protein.
Reactivity: Human
Applications: WB: 1:1000
Swiss-Prot No. : P03372
References: Shah YM, et al. (2005). Mol Endocrinol.19 (3): 732-748.
Sun M, et al. (2001). Cancer Res.61 (16): 5985-5991.
Campbell RA, et al. (2001). J Biol Chem.276 (13): 9817-9824.
Chen D, et al. (2000). Mol Cell.6 (1): 127-137.



Western blot analysis of extracts from MCF7 cells using Estrogen Receptor- α (Ab-167) antibody (AP21068).

For Research Use Only

Contact & Ordering Information: Angio-Proteomie, 11 Park Drive, Suite 12, Boston, MA 02215, USA. Fax: (480) 247-4337, angioproteomie@gmail.com