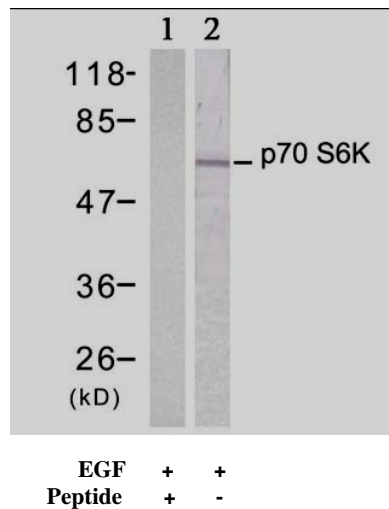


Rabbit anti p70 S6 Kinase (Ab-389)

- Catalog Number:** AP21182
Amount: 100µl (For 10 Western Blotting)
Form of Antibody: Rabbit IgG in phosphate buffered saline (without Mg²⁺ and Ca²⁺), pH 7.4, 150mM NaCl, 0.02% sodium azide and 50% glycerol.
Storage/Stability: Store at -20°C/1 year
Immunogen: The antiserum was produced against synthesized non-phosphopeptide derived from human p70 S6 Kinase around the phosphorylation site of threonine 389 (G-F-T^P-Y-V).
Purification: The antibody was affinity-purified from rabbit antiserum by affinity-chromatography using epitope-specific phosphopeptide. The antibody against non-phosphopeptide was removed by chromatography using non-phosphopeptide corresponding to the phosphorylation site.
Specificity/Sensitivity: p70 S6 Kinase(Ab-389) antibody detects endogenous levels of total p70 S6 Kinase protein.
- Reactivity:** Human, Mouse, Rat
Applications: WB: 1:1000
Swiss-Prot No. : P23443
References: Satoru Eguchi et al. (1999) J Biol Chem, Vol. 274: 36843-36851
Papst PJ, et al. (1998) J Biol Chem. 273(24):15077-84.
Ulrike Krause et al. (2002) Eur. J. Biochem. 269: 3751-3759 c
Le, X.F, et al. (2003) Oncogene 22: 484-97



Western blot analysis of extract from 293 cells treated with EGF (200ng/ml, 15min), using p70 S6 Kinase (Ab-389) antibody (AP21182, Lane 1 and 2).

For Research Use Only

Contact & Ordering Information: Angio-Proteomie, 11 Park Drive, Suite 12, Boston, MA 02215, USA. Fax: (480) 247-4337, angioproteomie@gmail.com