

RayBio[®] Cell-Based Human/Mouse/Rat STAT1,3,5 Phosphorylation ELISA Sampler Kit

For the semi-quantitative detection of phosphorylated human, mouse, or rat STAT1 (Tyr701), STAT3 (Tyr705), STAT5 (Tyr694) and total STAT1, STAT3, and STAT5 in adherent whole cell lines.

User Manual (Revised May 24, 2013)

Cat#: CBEL-STAT-SK (2 plate kit)

Please read manual carefully
before starting experiment



Tel: (Toll Free) 1-888-494-8555 or +1-770-729-2705; Fax: +1-770-206-2393;
Website: www.raybiotech.com Email: info@raybiotech.com



Cell-Based Human/Mouse/Rat STAT1,3,5 Phosphorylation ELISA Sampler Kit

TABLE OF CONTENTS

I. Introduction.....	2
II. How It Works.....	3
III. Reagents and Storage.....	4
IV. Additional Reagents Required.....	4
V. Reagent Preparation	5
VI. Assay Procedure	6
VII. Assay Procedure Summary	9
VIII. Quality Control Data	10
IX. References	14
X. Troubleshooting Guide	15

I. INTRODUCTION

Protein phosphorylation is instrumental in the regulation of protein activity within a cell. It plays important roles in the living cells including proliferation, differentiation and metabolism. A large number of protein kinases and phosphatases have been extensively investigated, and have been shown to be involved in signal transduction pathways.

The RayBio[®] Cell-Based Human/Mouse/Rat STAT1,3,5 Phosphorylation ELISA Sampler Kit is a very rapid, convenient and sensitive assay kit which can monitor the activation or function of important biological pathways in cells. It can be used for measuring the relative amount of STAT1 (Tyr701), STAT3 (Tyr705) and STAT5 (Tyr694) phosphorylation and screening the effect of various treatment, inhibitors (such as siRNA or chemicals), or activators in cultured human, mouse and rat cell lines **(STAT5 only can be used for detecting human cell lines)**. By determining specific protein phosphorylation in your experimental model system, you can verify pathway activation in your cell lines without spending excess time and effort in preparing cell lysate and performing an analysis of Western Blot. In the Cell-Based STAT1,3,5 Phosphorylation ELISA Sampler Kit, cells are seeded into a 96 well tissue culture plate. The cells are fixed after various treatment, inhibitors or activators. After blocking, anti-phospho-protein specific antibody or anti-pan-protein specific antibody is pipetted into the wells and incubated. The wells are washed and an HRP-conjugated secondary antibody is added to the wells. The wells are washed again, a TMB substrate solution is added to the wells and color develops in proportion to the amount of protein. The Stop Solution changes the color from blue to yellow, and the intensity of the color is measured at 450 nm.

See Figure 1 below for an illustration.

II. HOW IT WORKS

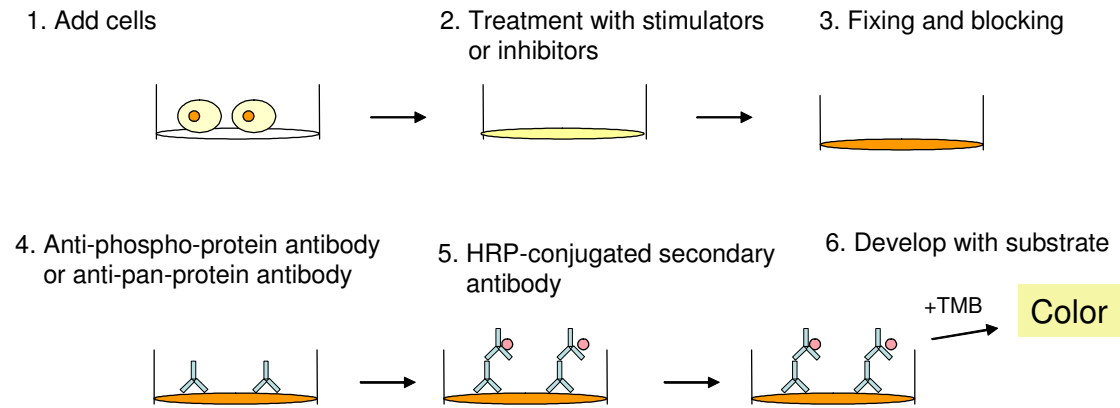


Fig.1. Cell-Based protein phosphorylation procedure

III. REAGENTS AND STORAGE

Store entire kit at $\leq -20\text{ }^{\circ}\text{C}$ immediately upon arrival. Kit must be used within the 6 month expiration date. Avoid repeated freeze-thaw cycles.

ITEM	COMPONENT	2 PLATE KIT	STORAGE AFTER INITIAL THAW*
A	Uncoated 96-Well Microplate	2 plates	Room Temperature
B	20X Wash Buffer A Concentrate	1 vial (30 ml)	2-8°C
C	20X Wash Buffer B Concentrate	1 vial (30 ml)	
D	Fixing Solution	1 vial (30 ml)	
E	30X Quenching Buffer Concentrate	1 vial (2 ml)	
F	5X Blocking Buffer Concentrate	1 vial (20 ml)	2-8°C (1 month)
G-1	15X Mouse Anti-phospho (Tyr701) STAT1 Concentrate	1 vial	-20°C
G-2	15X Mouse Anti-phospho (Tyr705) STAT3 Concentrate	1 vial	
G-3	15X Mouse Anti-phospho (Tyr694) STAT5 Concentrate	1 vial	
H-1	15X Mouse Anti-STAT1 Concentrate	1 vial	
H-2	15X Mouse Anti-STAT3 Concentrate	1 vial	
H-3	15X Mouse Anti-STAT5 Concentrate	1 vial	
I	HRP Conjugated Anti-Mouse IgG Concentrate	2 vials (10 μ l/ea)	2-8°C
J	TMB Substrate	2 vials (12 ml/ea)	
K	Stop Solution**	1 vial (14 ml)	

*For up to 3 months (unless otherwise stated) or until expiration date.

**Contains 0.2 M Sulfuric Acid

IV. ADDITIONAL MATERIALS REQUIRED

1. A model cell line, protein tyrosine kinase inhibitors, growth factors or cytokines
2. Microplate reader capable of measuring absorbance at 450 nm
3. 37°C incubator
4. Precision pipettes to deliver 2 μ l to 1 ml volumes
5. Adjustable 1-25 ml pipettes for reagent preparation
6. 100 ml and 1 liter graduated cylinders
7. Absorbent paper
8. Distilled or deionized water
9. Orbital shaker or oscillating rocker

V. REAGENT PREPARATION

NOTE: Thaw all reagents to room temperature immediately before use. If wash buffers contain visible crystals, warm to room temperature and mix gently until dissolved.

NOTE: Briefly centrifuge (~1,000g) ITEMS G, H, and I before opening to ensure maximum recovery.

ITEM	COMPONENT	PREPARATION	EXAMPLE	
A	Uncoated 96-Well Microplate	No Preparation	N/A	
B	20X Wash Buffer A Concentrate	Dilute 20-fold with distilled or deionized water	25 ml of concentrate + 475 ml of water = 500 ml of 1X working solution	
C	20X Wash Buffer B Concentrate			
D	Fixing Solution	No Preparation	N/A	
E	30X Quenching Buffer Concentrate	Dilute 30-fold with 1X Wash Buffer A	1 ml of concentrate + 29 ml of wash buffer = 30 ml of 1X working solution	
F	5X Blocking Buffer Concentrate	Dilute 5-fold with distilled or deionized water	20 ml of concentrate + 80 ml of water = 100 ml of 1X working solution	
PRIMARY ANTIBODY	G-1	<ol style="list-style-type: none"> 1. Reconstitute by adding 100 μl of 1X Blocking Buffer to each vial. 2. Pipette up and down to mix. 3. Dilute reconstituted stock 15-fold with 1X Blocking Buffer 	100 μ l of reconstituted stock + 1400 μ l of 1X Blocking Buffer = 1.5 ml of 1X working solution	
	G-2			
	G-3			
	H-1			
	H-2			
	H-3			
SECONDARY ANTIBODY	I	HRP Conjugated Anti-Mouse IgG Concentrate	Dilute 1000-fold with 1X Blocking Buffer for Items G1, G2, G3, H1 and H2	10 μ l of concentrate + 9990 μ l of 1X Blocking Buffer = 10 ml of 1X working solution
		Dilute 500-fold with 1X Blocking Buffer for Item H3	10 μ l of concentrate + 4990 μ l of 1X Blocking Buffer = 5 ml of 1X working solution	
J	TMB Substrate	No preparation	N/A	
K	Stop Solution			

VI. ASSAY PROCEDURE:

NOTE: ALL incubations and wash steps must be performed under gentle rocking or rotation (~1-2 cycles/sec).

1. Design your experiment. For example, see Figure 2 below.

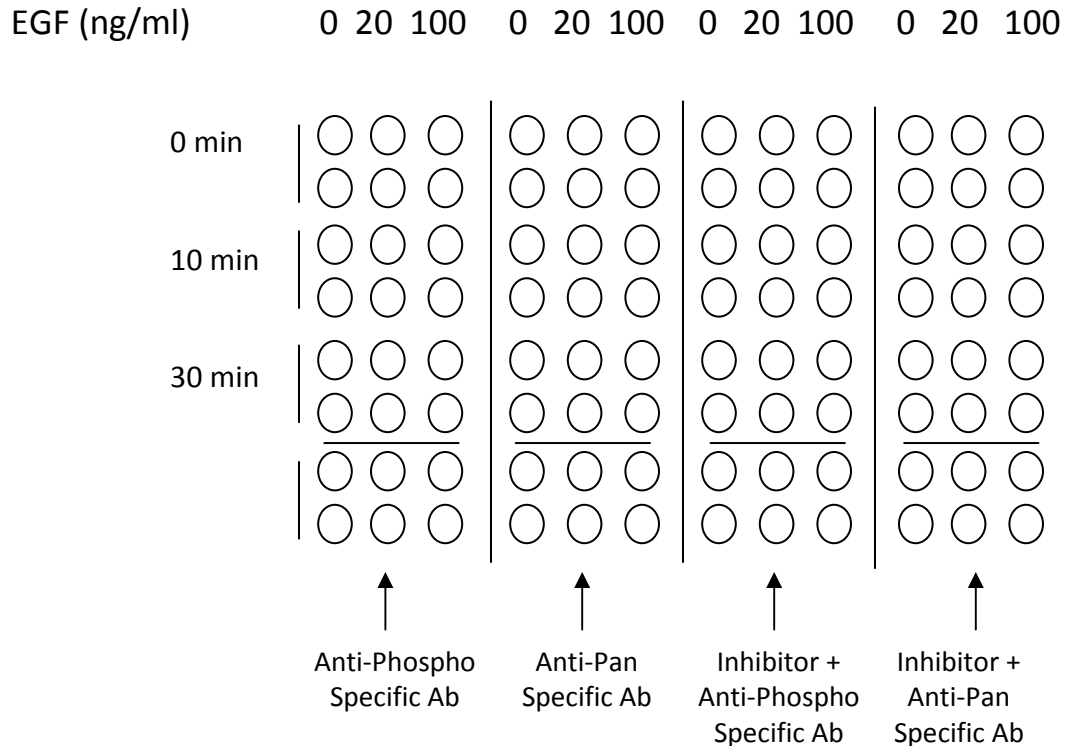


Fig. 2. Example of how to seed cells for RayBio® cell-based assay

OPTIONAL: If seeding HUVECs, HMEC-1 or other loosely attached cells, coat the Uncoated 96-Well Microplate (ITEM A) by adding 100 μ l poly-L-Lysine (Recommended Sigma Aldrich, Cat#: P4832) into each well and then follow manufacturer's instructions. A pre-coated CellBIND® microplate or other poly-lysine treated tissue culture plate may be used in place of ITEM A.

2. Seed 100 μ l of 20,000 to 30,000 cells into each well of the Uncoated 96-Well Microplate (ITEM A) provided and incubate overnight at 37°C with 5% CO₂.

NOTE: *The optimal cell number used will vary on the cell line and the relative amount of protein phosphorylation. More or less cells may be used but this must be determined empirically.*

NOTE: *The cells can be starved ~4-24 hours (depending on cell line) prior to treatment with inhibitors or activators.*

3. Apply various treatments, inhibitors (such as siRNA or chemicals) or activators according to manufacturer's instructions and incubate for the desired time points.

NOTE: *It is recommended to dissolve inhibitors or activators into serum-free cell culture medium before treating the cells (unless otherwise stated in the manufacturer's instructions.)*

4. Discard the cell culture medium by flipping the microplate upside down and **gently** tapping the bottom of the microplate over a sink.

5. Wash by pipetting 200 μ l of the **prepared 1X** Wash Buffer A (ITEM B) into each well. Discard the wash buffer (same as step 4) and wash 2 more times for a total of 3 washes using fresh wash buffer each time. After the final wash, gently blot the microplate onto a paper towel to remove any excess/remaining buffer.

NOTE: *To avoid cell loss, do not pipette directly onto the cells. Instead, gently dispense the liquid down the wall of cell culture wells. Also avoid the use of vacuum suction or too forcefully tapping the microplate when discarding any solution.*

6. Add 100 μ l of Fixing Solution (ITEM D) into each well and incubate for 20 minutes at room temperature.

NOTE: *The fixing solution is used to permeabilize the cells.*

7. Repeat wash step 5.

8. Add 200 μ l of the **prepared 1X** Quenching Buffer (ITEM E) into each well and incubate 20 minutes at room temperature.

NOTE: *The quenching buffer is used to minimize the background response.*

9. Wash **4** times with 1X Wash Buffer A.

10. Add 200 µl of the **prepared 1X** Blocking Buffer (ITEM F) into each well and incubate for 1 hour at 37°C.

11. Wash **3** times with the **prepared 1X** Wash Buffer **B** (ITEM C).

NOTE: *If needed, the microplate may be stored at -80°C for several days after this wash.*

12. Add 50 µl of the **prepared 1X** primary antibody (ITEM G1, G3, H1, or H3) into each corresponding well and incubate for 2 hours at room temperature. Incubate Items G2 and H2 overnight at 4 °C.

NOTE: *Do not incubate Item G2 and H2 for 2 hours at room temperature or weak absorbances may result. Item G2 and H2 can be incubated overnight first followed by Item G1, G3, H1 or H3 incubations OR separate plates can be used.*

13. Wash **4** times with 1X Wash Buffer B.

14. Add 50 µl of the **prepared 1X** HRP Conjugated secondary antibody (ITEM I) into each well and incubate for 1 hour at room temperature.

15. Repeat step 13.

16. Add 100 µl of the TMB Substrate (ITEM J) into each well and incubate for 30 minutes at room temperature **in the dark**.

17. Add 50 µl of the Stop Solution (ITEM K) into each well. Read at 450 nm immediately.

VII. ASSAY PROCEDURE SUMMARY

1. Seed 20,000 to 30,000 cells into each well and incubate overnight.



2. Apply various treatment, inhibitors or activators according to manufacturer's instructions.



3. Add 100 μl of Fixing Solution into each well and incubate for 20 minutes at room temperature.



4. Add 200 μl of prepared 1X Quenching Buffer and incubate for 20 minutes at room temperature.



5. Add 200 μl of prepared 1X Blocking Buffer and incubate for 1 hour at 37°C.



6. Add 50 μl of prepared 1X primary antibody into each well and incubate for 2 hours at room temperature.



7. Add 50 μl of prepared 1X HRP Conjugated secondary antibody and incubate for 1 hour at room temperature.



8. Add 100 μl TMB Substrate and incubate 30 minutes at room temperature.



9. Add 50 μ l Stop Solution to each well. Read at 450 nm immediately.

VIII. QUALITY CONTROL DATA

Representative results are shown below:

1. Seeded 100 μ l of 30,000 (for STAT1 and STAT3) or 20,000 (for STAT5) A431 cells into each appropriate well in microplate. Cells were incubated at 37°C in 5% CO₂ over night.
2. Added 50 μ l of different concentrations of stimulators (rhEGF concentration for A431 cells: 0, 20 or 100 ng/ml in serum free DMEM) to appropriate wells (shown below). Then incubated for 10 min at 37°C.
3. Discarded the solution and washed 3 times with 1X Wash Buffer A (200 μ l each) immediately. Then flipped the microplate upside down and gently tapped to remove all of excess wash buffer. The protocol was continued as stated.

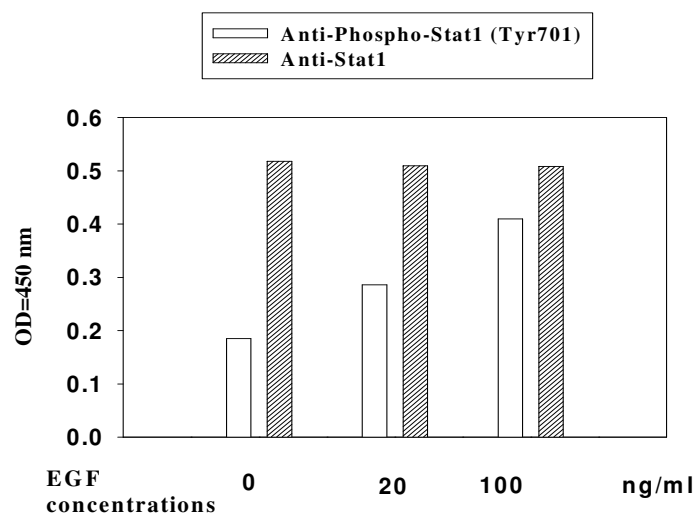


Fig. 3.1. A431 cells were stimulated by different concentrations of EGF for 30 minutes at 37°C.

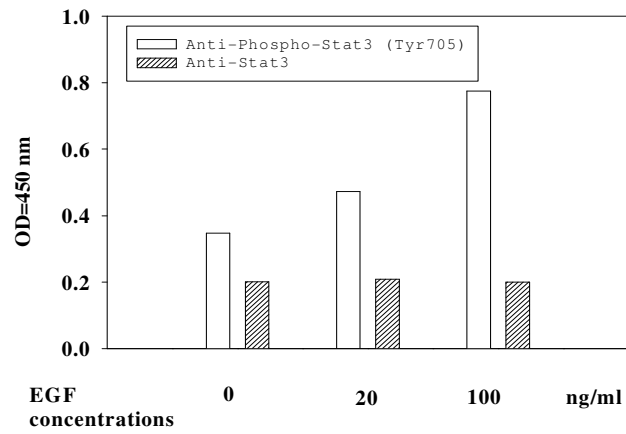


Fig. 3.2. A431 cells were stimulated by different concentration EGF for 30 min at 37°C

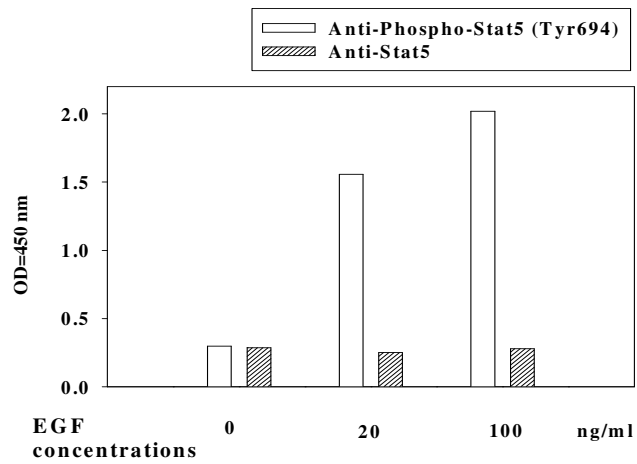


Fig. 3.3. A431 cells were stimulated by different concentrations of EGF for 30 minutes at 37°C

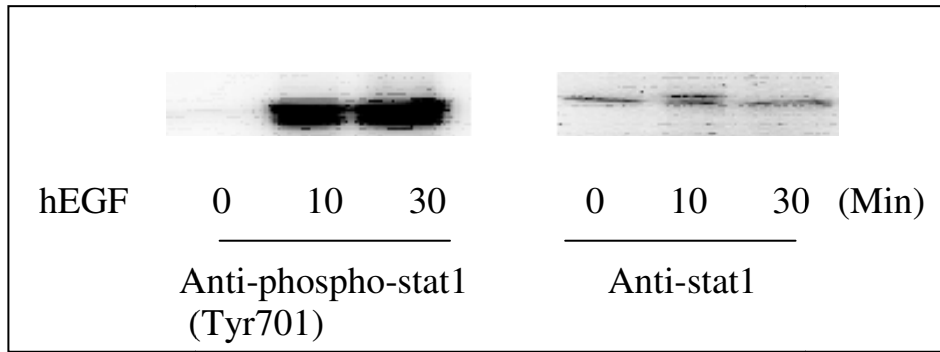


Fig. 4.1. Western blot analysis of extracts from 100 ng/ml hEGF treated A431 cells. Phospho-stat1 (Tyr701) and stat1 antibodies were used in both detection assays.

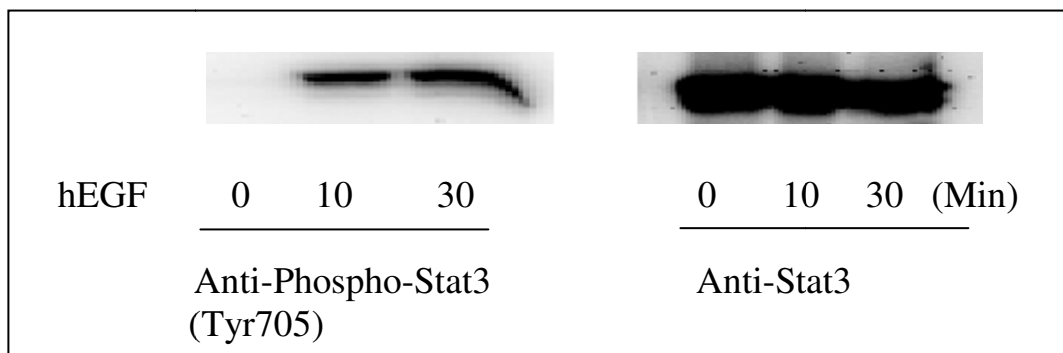


Fig. 4.2. Western blot analysis of extracts from 100 ng/ml hEGF treated A431 cells. Phospho-stat3 (Tyr705) and stat3 antibodies were used in both detection assays.

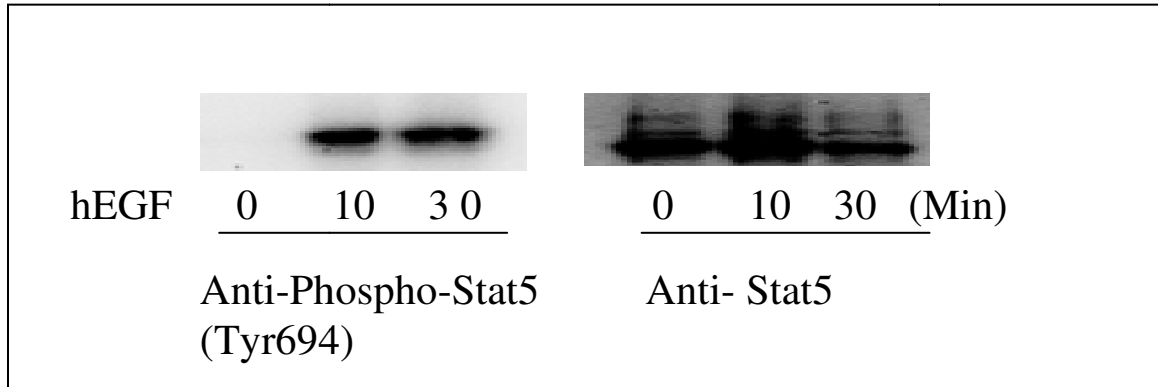


Fig. 4.3. Western blot analysis of extracts from 100 ng/ml hEGF treated A431 cells. Phospho-Stat5 (Tyr694) and Anti-Stat5 antibodies were used in both detection assays.

IX. REFERENCES:

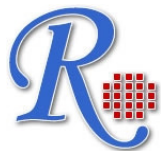
1. Michael J. Clemens and Michael C. 1997. *Protein Phosphorylation in Cell Growth Regulation*. 1 Edition.
2. Fu, X.Y., et al. 1993 *Cell* 74:1135.
3. Darnell, J.E. 1997 *Science* 277:1630.
4. Kanai, M., et al. 2003. *Oncogene* 22:548-554.
5. Smith, P.D. & Crompton, M.R. 1998. *Biochem. J.* 331:381.
6. Wakao, H., et al. 1994. *EMBO J*, 12:2182.
7. Gouilleus, F., et al. 1994. *EMBO J*, 13:4361.
8. Park, D. S., et al. 2002. *Mol. Biol. Cell*, 13:3416-3430.

X: TROUBLESHOOTING GUIDE

Problem	Cause	Solution
1. Low signal	<ol style="list-style-type: none"> 1. Improper storage of the ELISA kit 2. Improper dilution 3. Cells drop off from the wells 	<ol style="list-style-type: none"> 1. Store the kit according to manual instructions. Keep substrate solution in dark. 2. Ensure correct preparation of antibody and reagents. 3. Some of treatments may make cells drop off the wells. Reduce inhibitor or activator concentration.
2. High background	<ol style="list-style-type: none"> 1. Inadequate washing 2. Too much cells 	<ol style="list-style-type: none"> 1. Be sure to remove all of washing solution and follow the recommendation for washing. 2. Reduce the cell number.
3. Large CV	<ol style="list-style-type: none"> 1. Inaccurate pipetting 2. Remaining wash buffer in the well 3. Cells drop off from the wells 	<ol style="list-style-type: none"> 1. Check pipette. 2. Remove all of wash buffer. 3. Please don't directly face the cells with tips when adding reagents or wash buffer.

NOTES:

This product is for research use only.



©2004 RayBiotech, Inc.