



RayBiotech, Inc.

3607 Parkway Lane suite 200
Norcross, GA 30092
Tel: 770-729-2992, 1-888-494-8555
Fax: 770-206-2393
Website: www.raybiotech.com
Email: info@raybiotech.com

Certificate of Analysis and Data Sheet

Goat Anti AIRE (isoform 1 and 2)

With HRP-conjugated Secondary Antibody

Catalog No.
ER-14-0116

Target Species
Human

Description

Synonyms: AIRE; autoimmune regulator (autoimmune polyendocrinopathy candidiasis ectodermal dystrophy) ; AIRE1; APECED; APS1; APSI; PGA1 ; autoimmune regulator (APECED protein); autoimmune regulator (automimmune polyendocrinopathy candidiasis ectodermal dystrophy);

Official Symbol: AIRE

Accession Numbers: NP_000374.1, NP_000649.1

Specificity: This antibody is expected to recognize isoforms 1 and 2 (NP_000374.1 and NP_000649.1 respectively).

Preparation

Purification: Purified from goat serum by ammonium sulfate precipitation followed by antigen affinity chromatography using the immunizing peptide.

Immunogen: Peptide with sequence C-QSMARPAAPFPS, from the C Terminus of the protein sequence according to NP_000374.1, NP_000649.1.

Presentation: Supplied at 0.5 mg/ml in Tris saline, 0.02% sodium azide, pH7.3 with 0.5% bovine serum albumin.

Storage

Aliquot and store at -20°C. Minimize freezing and thawing.

Reference

Kumar PG, Laloraya M, Wang CY, Ruan QG, Davoodi-Semiromi A, Kao KJ, She JX.
The autoimmune regulator (AIRE) is a DNA-binding protein.
J Biol Chem. 2001 Nov 2;276(44):41357-64. Epub 2001 Aug 31.
PMID: 11533054

**The products are furnished for LABORATORY RESEARCH USE ONLY.
Not for diagnostic or therapeutic use.**



RayBiotech, Inc.

3607 Parkway Lane suite 200
Norcross, GA 30092
Tel: 770-729-2992, 1-888-494-8555
Fax: 770-206-2393
Website: www.raybiotech.com
Email: info@raybiotech.com

Applications

Table Summary of antibody applications and working conditions

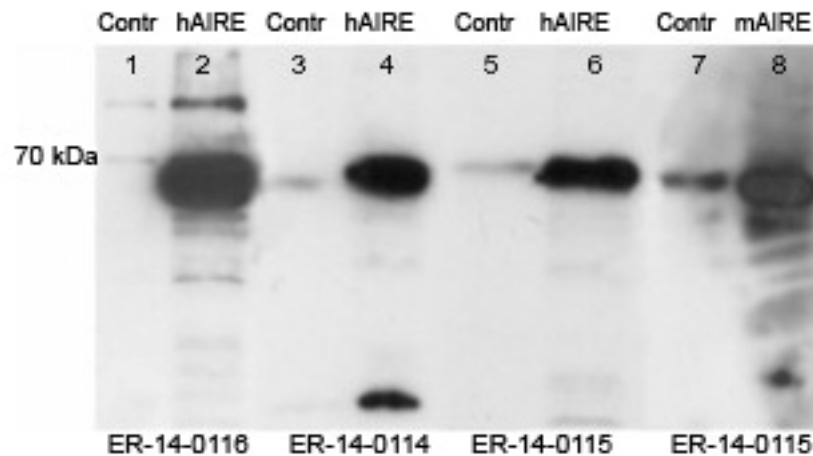
Options / Functions	YES	NO	Not determined	Recommended Work dilution or concentration
Peptide ELISA (1)	.			
Western Blot (2)	.			0.01-0.03 μ g/ml
IHC - Paraffin	.			2.5 μ g/ml

Note: Other applications are not tested yet. Optimal dilutions should be determined by each laboratory for each application.

(1) Antibody detection limit dilution 1:32,000

(2) 60kDa in transfected HEK293 lysates (calculated MW of 57.7kDa according to NP_000374.1).

Image



ER-14-0116 staining (0.01 μ g/ml) of HEK293 cell lysate.
Untransfected (Lane 1) and transfected with Human AIRE (lane 2).

**The products are furnished for LABORATORY RESEARCH USE ONLY.
Not for diagnostic or therapeutic use.**