



RayBiotech, Inc.

3607 Parkway Lane suite 200
Norcross, GA 30092
Tel: 770-729-2992, 1-888-494-8555
Fax: 770-206-2393
Website: www.raybiotech.com
Email: info@raybiotech.com

Certificate of Analysis and Data Sheet

Goat Anti-CMG1 / CCDC2 / IFT74

With HRP-conjugated Secondary Antibody

Catalog No.
ER-14-0349

Accession Number
NP_001092692.1; NP_001092693.1;
NP_079379.2; AAK77221.1

Target Protein

Principal Names: CMG1, coiled-coil domain containing 2, capillary morphogenesis protein 1, intraflagellar transport 74 homolog (Chlamydomonas), MGC111562, FLJ22621, CMG-1, CCDC2, IFT74

Official Symbol: IFT74

Accession Number(s): NP_001092692.1; NP_001092693.1; NP_079379.2; AAK77221.1

Human GeneID(s): [80173](#)

Non-Human GeneID(s): 313365 (rat)

Immunogen

Peptide with sequence C-KTIVDALHSTSGN, from the C Terminus of the protein sequence according to NP_001092692.1; NP_001092693.1; NP_079379.2; AAK77221.1.

Purification and Storage

Purified from goat serum by ammonium sulphate precipitation followed by antigen affinity chromatography using the immunizing peptide.

Supplied at 0.5 mg/ml in Tris saline, 0.02% sodium azide, pH7.3 with 0.5% bovine serum albumin.

Aliquot and store at -20°C. Minimize freezing and thawing.

Applications Tested

Peptide ELISA: antibody detection limit dilution 1:16000.

Western blot: Approx 70-75kDa band observed in lysates of cell line HEK293 (calculated MW of 69.2kDa according to AAK77221.1, but 51.4kDa according to NP_079379.1). The observed molecular weight corresponds to earlier findings in literature with different antibodies (Momeni et al, BMC Neurol. 2006 Dec 13;6:44.; PMID: 17166276). Recommended concentration: 0.3-1µg/ml.

IHC: In paraffin embedded Human Liver shows vesicular staining in cytoplasm of hepatocytes. Recommended concentration, 5-10µg/ml.

Immunofluorescence: EB06339 was successfully used at 2.5mg/ml to stain rat cortical neurons (see picture and PMID: 17166276).

**The products are furnished for LABORATORY RESEARCH USE ONLY.
Not for diagnostic or therapeutic use.**



RayBiotech, Inc.

3607 Parkway Lane suite 200
Norcross, GA 30092
Tel: 770-729-2992, 1-888-494-8555
Fax: 770-206-2393
Website: www.raybiotech.com
Email: info@raybiotech.com

Species Reactivity

Tested: Human, Rat

Expected from sequence similarity: Human, Rat

Specific References

This antibody has been successfully used in the following papers:

Momeni P, Schymick J, Jain S, Cookson MR, Cairns NJ, Greggio E, Greenway MJ, Berger S, Pickering-Brown S, Chiò A, Fung HC, Holtzman DM, Huey ED, Wassermann EM, Adamson J, Hutton ML, Rogaeva E, St George-Hyslop P, Rothstein JD, Hardiman O, Grafman J, Singleton A, Hardy J, Traynor BJ.

Analysis of IFT74 as a candidate gene for chromosome 9p-linked ALS-FTD.

BMC Neurol. 2006 Dec 13;6:44

PMID: 17166276

Boldt K et.al.

Disruption of intraflagellar protein transport in photoreceptor cilia causes Leber congenital amaurosis in humans and mice.

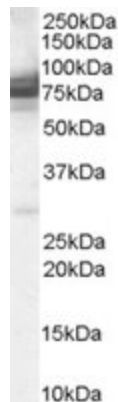
J Clin Invest. 2011 Jun 1;121(6):2169-80.

PMID: 21606596

Secondary Antibody Applications

Immunoassay (ELISA, Western blotting): 1:5,000-1:10,000

Image



ER-14-0349 staining (0.3µg/ml) of 293 lysate (RIPA buffer, 35µg total protein per lane).
Primary incubated for 1 hour. Detected by western blot using chemiluminescence.

**The products are furnished for LABORATORY RESEARCH USE ONLY.
Not for diagnostic or therapeutic use.**