

Catalog No. LF-MA0149

MONOCLONAL ANTIBODY



Anti-Complement Factor H(63G5)

Background : The complement system is a crucial component of the innate immunity against microbial infection. Complement factor H, a 155 kDa plasma glycoprotein, is an essential regulatory protein that plays a critical role in the homeostasis of the complement system in plasma and in the protection of bystander host cells and tissues from damage by complement activation. Factor H binds to C3b, accelerates the decay of the alternative pathway C3-convertase and acts as a cofactor for the factor I-mediated proteolytic inactivation of C3b. In addition, factor H has multiple physiological activities 1) acts as an extracellular matrix component, 2) binds to cellular receptors of the integrin type, and 3) interacts with a wide selection of ligands, such as the C-reactive protein, thrombospondin, bone sialoprotein, osteopontin, and heparin. Complement factor H has revealed an association with two different renal diseases, glomerulonephritis and atypical hemolytic uremic syndrome (aHUS).

Immunogen : Protein purified from Human plasma

Host : Mouse

Clone number : 63G5

Isotype : IgG2b, k

Size : 100 μl

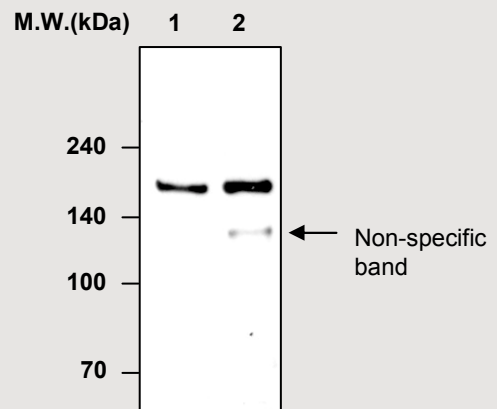
Compositon : PBS containing 50% glycerol

Positive control : Human plasma

Storage : Store for 1 year at -20°C from date of shipment

Species cross reactivity

Human +	Mouse NT	Rat NT
------------	-------------	-----------



Immunoprecipitation Analysis of human plasma using anti-Complement factor H antibody
Lane 1 : human plasma
Lane 2 : Immunoprecipitates
Immunoblot : anti-Complement Factor H antibody (#LF-MA0133)

Applications :

ELISA

Immunoprecipitation (1 μl for 400 μl lysate)

Background Reference :

- 1) Ripoché, J. et al (1988) Biochem J vol.249: pp.593-602
- 2) Pangburn MK. et al (2000) J. Immunol. vol.164: pp.4742-4751
- 3) Rodríguez de Córdoba S, et al, (2004) Mol Immunol. vol.41(4): pp.355-67.
- 4) Zipfel PF. (2001) Semin Thromb Hemost. vol.27(3): pp.191-9.

FOR RESEARCH PURPOSE ONLY
NOT FOR DIAGNOSTIC OR THERAPEUTIC USE