

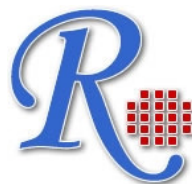
RayBio® Phospho-p38 alpha MAPK (Thr180/Tyr182) ELISA Kit

**For Measuring Phosphorylated p38 alpha MAPK
(Thr180/Tyr182) in Human and Mouse Cell Lysates**

**User Manual
(Revised Mar 1, 2012)**

**RayBio® p38 alpha MAPK
(Thr180/Tyr182) ELISA Kit Protocol**

(Cat#: PEL-P38-T180-001)

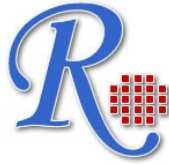


RayBiotech, Inc.

**We Provide You With Excellent
Protein Array System And Service**

Tel:(Toll Free)1-888-494-8555 or 770-729-2992; Fax:770-206-2393;

Web: www.raybiotech.com Email: info@raybiotech.com



RayBiotech, Inc.

**RayBio® Phospho-p38 alpha MAPK (Thr180/Tyr182)
ELISA Kit Protocol**

TABLE OF CONTENTS

I.	Introduction.....	2
II.	Material Provided.....	3
III.	Storage.....	3
IV.	Additional Materials Required.....	4
V.	Sample Preparation.....	4
VI.	Reagent Preparation.....	5
VII.	Assay Procedure.....	7
VIII.	Assay Procedure Summary.....	8
IX.	Typical Data.....	9
	i. Positive Control.....	9
	ii. Anisomycin Stimulation of Hela Cell Lines.....	10
X.	Troubleshooting Guide.....	12

I. INTRODUCTION

RayBio®Phospho-p38 alpha MAPK (Thr180/Tyr182) ELISA (Enzyme-Linked Immunosorbent Assay) kit is a very rapid, convenient and sensitive assay kit that can monitor the activation or function of important biological pathways in human and mouse cell lysates. By determining phosphorylated p38 alpha MAPK protein in your experimental model system, you can verify pathway activation in your cell lysates. You can simultaneously measure numerous different cell lysates without spending excess time and effort in performing a Western Blotting analysis.

This Sandwich ELISA kit is an in vitro enzyme-linked immunosorbent assay for the measurement of human and mouse phospho-p38 alpha MAPK (Thr180/Tyr182). An anti-phospho-p38 MAPK (Thr180/Tyr182) antibody has been coated onto a 96-well plate. Samples are pipetted into the wells and phosphorylated p38 MAPK (Thr180/Tyr182) present in a sample is bound to the wells by the immobilized antibody. The wells are washed and anti-p38 alpha MAPK antibody is used to detect phosphorylated p38 alpha MAPK. After washing away unbound antibody, HRP-conjugated anti-rabbit IgG is pipetted to the wells. The wells are again washed, a TMB substrate solution is added to the wells and color develops in proportion to the amount of p38 alpha MAPK (Thr180/Tyr182) bound. The Stop Solution changes the color from blue to yellow, and the intensity of the color is measured at 450 nm.

II. MATERIAL PROVIDED

1. Microplate (Item A): 96 wells (12 strips x 8 wells) coated with anti-phospho-p38 MAPK (Thr180/Tyr182) antibody.
2. Wash Buffer Concentrate (20x) (Item B): 25 ml of 20x concentrated solution
3. Assay Diluent (Item E): 15 ml of 5x concentrated buffer. For diluting cell lysate sample, detection antibody (Item C) and HRP-conjugated Anti-rabbit IgG (Item D-1).
4. Detection Antibody p38 alpha MAPK (Item C): 2 vial of rabbit anti-p38 alpha MAPK (each vial is enough to assay half microplate).
5. HRP-conjugated Anti-rabbit IgG (Item D-1), 25 μ l of 500x HRP-conjugated anti-rabbit IgG concentrate.
6. TMB One-Step Substrate Reagent (Item H): 12 ml of 3,3',5,5'-tetramethylbenzidine (TMB) in buffered solution.
7. Stop Solution (Item I): 8 ml of 0.2 M sulfuric acid.
8. Cell Lysate Buffer (Item J): 5 ml 2x cell lysis buffer (not including protease and phosphatase inhibitors).
9. Positive Control HelaA003-1 (Item K): 2 vials of lyophilized powder from treated Hela cell lysate.

III. STORAGE

Upon receipt, the kit should be stored at -20°C . Please use within 6 months from the date of shipment. After initial use, Wash Buffer Concentrate (Item B), Assay Diluent (Item E), TMB One-Step Substrate Reagent (Item H), Stop Solution (Item I) and Cell

Lysate Buffer (Item J) should be stored at 4 °C to avoid repeated freeze-thaw cycles. Return unused wells to the pouch containing desiccant pack, reseal along entire edge and store at –20 °C. Item D-1 store at 2-8 °C for up to one month (store at -20 °C for up to 6 months, avoid repeated freeze-thaw cycles). Reconstituted Positive Control (Item K) should be stored at -70 °C.

IV. ADDITIONAL MATERIALS REQUIRED

- 1 Microplate reader capable of measuring absorbance at 450 nm.
- 2 Protease and Phosphatase inhibitors.
- 3 Shaker.
- 4 Precision pipettes to deliver 2 µl to 1 ml volumes.
- 5 Adjustable 1-25 ml pipettes for reagent preparation.
- 6 100 ml and 1 liter graduated cylinders.
- 7 Distilled or deionized water.
- 8 Tubes to prepare sample dilutions.

V. SAMPLE PREPARATION

Cell lysates - Rinse cells with PBS, making sure to remove any remaining PBS before adding the Cell Lysate Buffer. Solubilize cells at 4×10^7 cells/ml in 1x Cell Lysate Buffer (we recommend adding protease and phosphatase inhibitors to Cell Lysate Buffer prior to sample preparation). Pipette up and down to resuspend and incubate the lysates with shaking at 2 - 8° C for 30 minutes. Microcentrifuge at 13,000 rpm for 10 minutes at 2 - 8° C, and transfer the supernates into a clean test tube. Lysates should be used immediately or aliquoted and stored at –70 °C. Avoid repeated

freeze-thaw cycles. Thawed lysates should be kept on ice prior to use.

For the initial experiment, we recommend to do a serial dilution testing such as 5-fold and 100-fold dilution for your cell lysates with 1x Assay Diluent (Item E) before use.

Note: The fold dilution of sample used depends on the abundance of phosphorylated proteins and should be determined empirically. More of the sample can be used if signals are too weak. If signals are too strong, the sample can be diluted further.

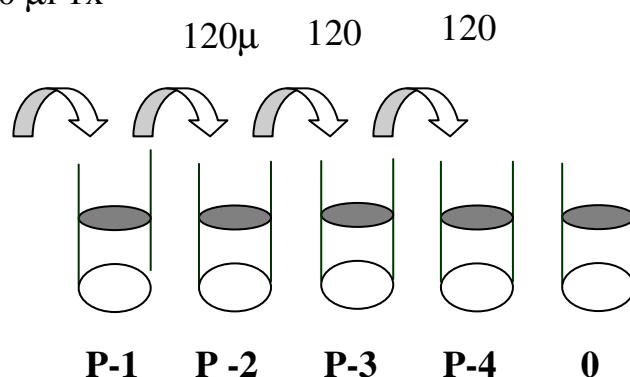
Cell Lysate Buffer should be diluted 2-fold with deionized or distilled water before use (recommend to add protease and phosphatase inhibitors).

VI. REAGENT PREPARATION

1. Bring all reagents and samples to room temperature (18 - 25°C) before use.
2. Item E, Assay Diluent should be diluted 5-fold with deionized or distilled water before use.
3. Briefly spin the Positive Control vial of Item K. Add 400 μ l 1x Assay Diluent (Item E, Assay Diluent should be diluted 5-fold with deionized or distilled water before use) into Item K vial to prepare a Positive Control (P-1) Solution. **Dissolve the powder thoroughly by a gentle mix** (it can be removed by centrifuge if any precipitate in the solution is found. See i. Positive Control

of part IX. TYPICAL DATA for a typical result in page 9). Pipette 240 μ l 1x Assay Diluent into each tube. Use the Positive Control (P-1) to produce a dilution series (shown below). Mix each tube thoroughly before the next transfer. 1x Assay Diluent serves as the background.

Vial of Item K + 400 μ l 1x
Assay Diluent



4. If the Wash Concentrate (20x) (Item B) contains visible crystals, warm to room temperature and mix gently until dissolved. Dilute 20 ml of Wash Buffer Concentrate into deionized or distilled water to yield 400 ml of 1x Wash Buffer.
5. Briefly spin the detection antibody p38 alpha MAPK (Item C) before use. Add 100 μ l of 1x Assay Diluent into the vial to prepare a detection antibody concentrate. Pipette up and down to mix gently (the concentrate can be stored at 4°C for 5 days). The detection antibody should be diluted 55-fold with 1x Assay Diluent and used in step 4 of Part VII Assay Procedure.
6. Briefly spin the HRP-conjugated anti-rabbit IgG (Item D-1) before use. Pipette up and down to mix gently. HRP-conjugated anti-rabbit IgG concentrate should be diluted 1,000-

fold with 1x Assay Diluent.

For example: Briefly spin the vial (ItemD) and pipette up and down to mix gently. Add 10 µl of HRP-conjugated anti-rabbit IgG concentrate into a tube with 10 ml 1x Assay Diluent to prepare a 1,000-fold diluted HRP-conjugated anti-rabbit IgG solution.

7. Cell Lysate Buffer should be diluted 2-folds with deionized or distilled water before use (recommend to add protease and phosphatase inhibitors).

VII. ASSAY PROCEDURE:

1. Bring all reagents to room temperature (18 - 25°C) before use. It is recommended that all samples or Positive Control should be run at least in duplicate.
2. Add 100 µl of each sample or positive control into appropriate wells. Cover well with plate holder and incubate for 2.5 hours at room temperature or over night at 4°C with shaking.
3. Discard the solution and wash 4 times with 1x Wash Solution. Wash by filling each well with Wash Buffer (300 µl) using a multi-channel pipette or autowasher. Complete removal of liquid at each step is essential to good performance. After the last wash, remove any remaining Wash Buffer by aspirating or decanting. Invert the plate and blot it against clean paper towels.

4. Add 100 μ l of prepared 1X anti-p38 alpha MAPK antibody (Reagent Preparation step 5) to each well. Incubate for 1 hour at room temperature with shaking.
5. Discard the solution. Repeat the wash as in step 3.
6. Add 100 μ l of prepared 1X HRP-conjugated anti-rabbit IgG solution (see Reagent Preparation step 6) to each well. Incubate for 2 hour at room temperature with shaking.
7. Discard the solution. Repeat the wash as in step 3.
8. Add 100 μ l of TMB One-Step Substrate Reagent (Item H) to each well. Incubate for 30 minutes at room temperature in the dark with shaking.
9. Add 50 μ l of Stop Solution (Item I) to each well. Read at 450 nm immediately.

VIII. ASSAY PROCEDURE SUMMARY

1. Prepare all reagents, samples and standards as instructed.



2. Add 100 μ l sample or positive control to each well.
Incubate 2.5 hours at room temperature or over night at 4°C.



3. Add 100 μ l prepared primary antibody to each well.
Incubate 1.0 hours at room temperature.



4. Add 100 μ l prepared 1X HRP-conjugated anti-rabbit IgG solution. Incubate 2 hour at room temperature.



5. Add 100 μ l TMB One-Step Substrate Reagent to each well.
Incubate 30 minutes at room temperature.



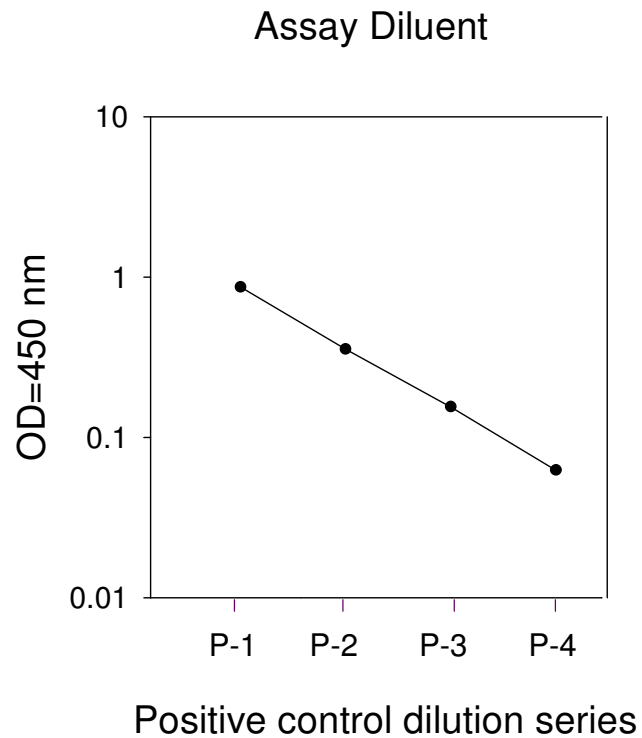
6. Add 50 μ l Stop Solution to each well.
Read at 450 nm immediately.

IX. TYPICAL DATA

ELISA data analysis: Average the duplicate readings for each sample or positive control.

i. Positive Control

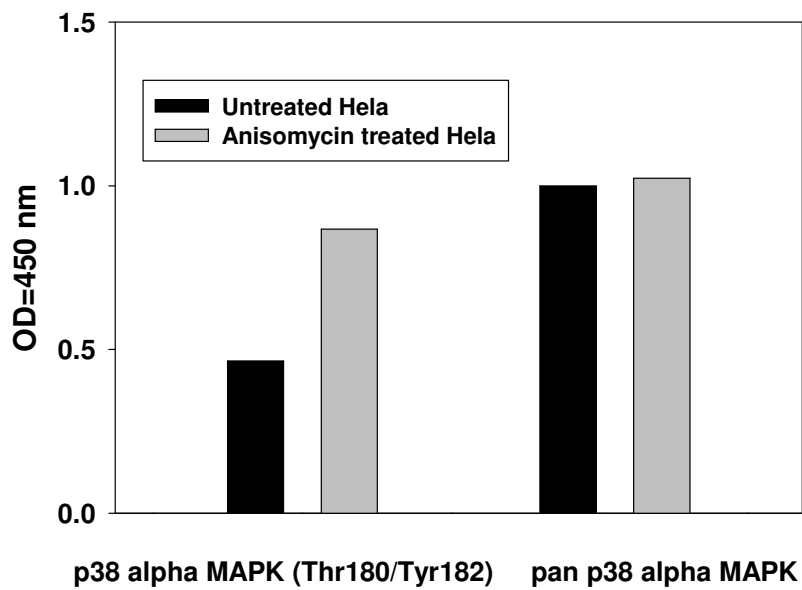
Hela cells were treated with Anisomycin at 37°C for 10 min. Solubilize cells at 4×10^7 cells/ml in Cell Lysate Buffer. Serial dilutions of lysates were analyzed in this ELISA. Please see step 3 of Part VI Reagent Preparation for detail.



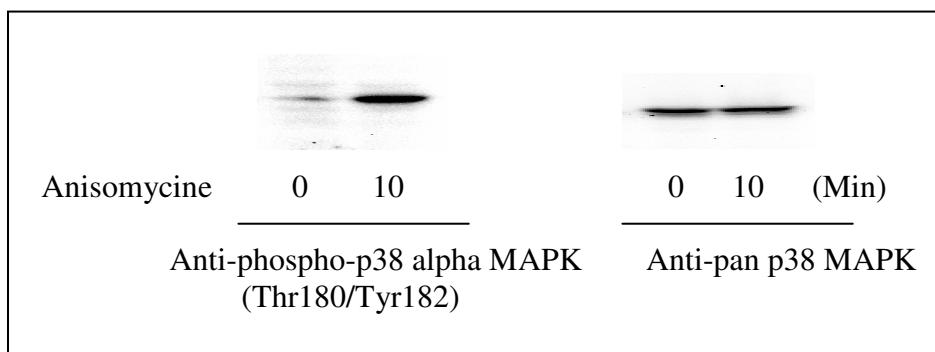
ii. Anisomycin Stimulation of HeLa Cell Lines

HeLa cells were treated or untreated with Anisomycin for 10 min at 37°C. Cell lysates were analyzed using this phosphoELISA and Western Blot.

A). ELISA



B). Western-Blot Analysis



X. TROUBLESHOOTING GUIDE

Problem	Cause	Solution
1. Sample signals: a. Too low b. Too high	a. Sample concentration is too low b. Sample concentration is too high	a. Increasing sample concentration b. Reducing sample concentration
2. Large CV	a. Inaccurate pipetting	a. Check pipettes
3. High background	a. Plate is insufficiently washed b. Contaminated wash buffer	a. Review the manual for proper washing. If using an automated plate washer, check that all ports are unobstructed. b. Make fresh wash buffer
4. Positive Control: Low signal	a. Improper storage of the ELISA kit b. Stop solution c. Improper primary or secondary antibody dilution	a. Upon receipt, the kit should be stored at -20°C . Store the positive control at -70°C after reconstitution. b. Stop solution should be added to each well before measurement and read OD immediately. c. Ensure correct dilution

RayBio® ELISA kits:

Over 200 ELISA kits, custom ELISA kit choose from over 500 list visit www.raybiotech.com for details.

RayBiotech, Inc., the protein array pioneer company, strives to research and develop new products to meet demands of the biomedical community. RayBio's patent-pending technology allows detection of over 180 cytokines, chemokines and other proteins in a single experiment. Our format is simple, sensitive, reliable and cost effective. Products include: Cytokine Arrays, Chemokine Arrays, ELISA kits, Phosphotyrosine kits, Recombinant Proteins, Antibodies, and custom services.

Antibody Array

Cytokine Antibody Array: Simultaneous detection up to 200 proteins (cytokine, chemokine, growth factor, adipokine, angiogenic factor, protease) in one experiment

Phosphorylation Antibody Array

- RTK antibody array
- STAT1 phosphorylation antibody arrays

Label based antibody array: Simultaneous detection more than 500 proteins in one experiment

Quantibody Array: Quantitative measurement of multiple protein levels

Protein Array

ELISA

Cell-Based Phosphorylation ELISA

Tissue MicroArray

Protein: Cytokine, Chemokine, Adipokine, Angiogenic factor, Virus, bacteria and infectious disease protein, hormone, Enzyme, other

Peptide

Antibody: Cytokine, Adipokine, Angiogenic factor, Signal transduction, Transcription factor, Receptor, Adhesion molecule, Virus, bacteria and other infectious agents, Secondary antibody, Tag antibody, Immunoglobulin, Hormone, Cell surface, Protease, other

**Antibody array, Protein array, Peptide array, ELISA, Phosphorylation assay
Tissue array**

Assay service: just simply send your samples and get data in 1 to 2 weeks.

Antibody array, Protein array, ELISA, Quantibody array

Antibody production: highest quality with very competitive price

Monoclonal antibody, Recombinant antibody, Polyclonal antibody, Phase display, Antibody engineering, Antibody conjugation

Recombinant protein production

Assay development

Array printing

Contact and non-contact arrayers. All kinds of substrates of your choice including glass slides, membranes and plates.

Note:

Note:

This product is for research use only.



©2004 RayBiotech, Inc.