

## bs-0009R-A647

### • Rabbit Anti-alpha-Synuclein(NT) Polyclonal Antibody, Alexa Fluor 647 conjugated

Conjugated Primary Antibodies

#### Background:

Alpha Synuclein is implicated in the regulation of dopamine release and transport. It is a soluble protein, expressed principally in the brain but also expressed in low concentrations in all tissues examined (except liver). In the nervous system, alpha Synuclein is primarily located at presynaptic terminals and is found membrane bound in dopaminergic neurons. It can form filamentous aggregates that are the major non amyloid component of intracellular inclusions in several neurodegenerative diseases (synucleinopathies), including Parkinson's Disease. Alpha Synuclein induces fibrillization of microtubule associated protein tau and reduces neuronal responsiveness to various apoptotic stimuli, leading to a decreased caspase 3 activation. Alpha synuclein is a protein phosphorylated predominantly on serine residues.

**Purification:** Was purified by Protein A and peptide affinity chromatography.

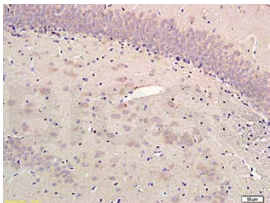
#### Storage:

Prepared as lyophilized powder or liquid and shipped on ice. Store at -20°C for one year. Protect from light.

#### Reconstitution:

If the antibody is in liquid form, no reconstitution needed.

Reconstitution is only required for the lyophilized antibody. Please refer to the reconstitution instruction card in the package.



For full size images and description please click [HERE](#).

**Size:** 100ul or 100ug lyophilized

**Concentration:** 1ug/uL

**Host:** Rabbit

#### Reactivities:

Human, Mouse, Rat, Chicken, Pig, Cow,

#### Application:

- IF(1:100-500)
- Not yet tested in other applications. Optimal working dilutions must be determined by the end user.

**Antibody Type:** Polyclonal

**Isotype:** IgG

**Molecular Weight:** 14kDa

#### Preservatives:

10ug/uL BSA and 0.1% NaN<sub>3</sub>.

For research use only. CAUTION: Not for human or animal therapeutic or diagnostic use.