

bs-0012M-HRP

• Mouse Anti- α -Synuclein Polyclonal Antibody, HRP conjugated

Conjugated Primary Antibodies

Background:

The synucleins, including alpha-synuclein (also designated NACP for nonamyloid component precursor), beta-synuclein (also designated PNP 14 for phospho-neuroprotein 14) and gamma-synuclein (also designated persyn or BCSG1 for breast cancer-specific gene 1) are presynaptic protein abundant in neurons. alpha-synuclein, a component of Alzheimer's disease amyloid plaques, is localized to neuronal cell bodies and synapses. Coordinate expression of alpha-synuclein and beta-synuclein may be important during hematopoietic cell differentiation. In patients with Parkinson's disease, a mutant form of alpha-synuclein has been found and gamma-synuclein is associated with axonal pathology.

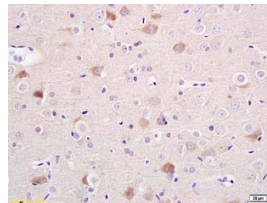
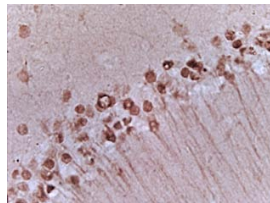
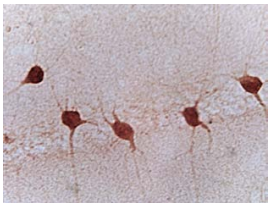
Purification: Was purified by Protein A and peptide affinity chromatography.

Storage: Prepared as lyophilized powder or liquid and shipped on ice. Store at -20°C for one year.

Reconstitution:

If the antibody is in liquid form, no reconstitution needed.

Reconstitution is only required for the lyophilized antibody. Please refer to the reconstitution instruction card in the package.



For full size images and description please click [HERE](#).

Size: 100ul or 100ug lyophilized

Concentration: 1ug/uL

Host: Mouse

Reactivities:

Human, Mouse, Rat, Dog, Pig, Cow, Horse, Sheep, Guinea Pig.

Application:

- WB(1:100-500)
- ELISA(1:500-1000)
- IHC-P(1:100-500)
- IHC-F(1:100-500)
- Not yet tested in other applications.
Optimal working dilutions must be determined by the end user.

Antibody Type: Polyclonal

Isotype: IgG

Molecular Weight: 15kDa

Preservatives:

10ug/uL BSA and 0.01% Gentamicin.

For research use only. CAUTION: Not for human or animal therapeutic or diagnostic use.