

## bs-0012M

### • Mouse Anti- $\alpha$ -Synuclein Polyclonal Antibody

#### Primary Antibodies

#### Background:

The synucleins, including alpha-synuclein (also designated NACP for nonamyloid component precursor), beta-synuclein (also designated PNP 14 for phospho-neuroprotein 14) and gamma-synuclein (also designated persyn or BCSG1 for breast cancer-specific gene 1) are presynaptic protein abundant in neurons. alpha-synuclein, a component of Alzheimer's disease amyloid plaques, is localized to neuronal cell bodies and synapses. Coordinate expression of alpha-synuclein and beta-synuclein may be important during hematopoietic cell differentiation. In patients with Parkinson's disease, a mutant form of alpha-synuclein has been found and gamma-synuclein is associated with axonal pathology.

#### Source/Purification:

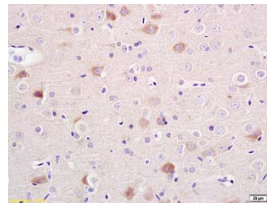
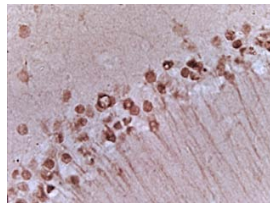
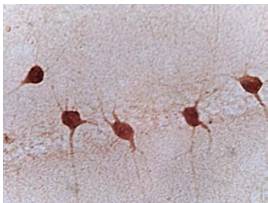
KLH conjugated synthetic peptide derived from human Alpha-Synuclein C-terminus. Was purified by Protein A and peptide affinity chromatography.

**Storage:** Prepared as lyophilized powder or liquid and shipped on ice. Store at -20°C for one year.

#### Reconstitution:

If the antibody is in liquid form, no reconstitution needed.

Reconstitution is only required for the lyophilized antibody. Please refer to the reconstitution instruction card in the package.



**Size:** 100ul or 100ug lyophilized

**Concentration:** 1ug/uL

**Host:** Mouse

#### Reactivities:

Human, Mouse, Rat, Dog, Pig, Cow, Horse, Sheep, Guinea Pig.

#### Application:

- WB(1:100-500)
- ELISA(1:500-1000)
- IP(1:20-100)
- IHC-P(1:100-500)
- IHC-F(1:100-500)
- IF(1:100-500)
- Not yet tested in other applications. Optimal working dilutions must be determined by the end user.

**Antibody Type:** Polyclonal

**Isotype:** IgG

**Molecular Weight:** 15kDa

**Preservatives:** 10ug/uL BSA and 0.1% NaN3.

For research use only. CAUTION: Not for human or animal therapeutic or diagnostic use.

For full size images and description please click [HERE](#).