

## bs-0042R-Biotin

### • Rabbit Anti-ChAT Polyclonal Antibody, Biotin conjugated

Conjugated Primary Antibodies

#### Background:

The neurotransmitter acetylcholine is synthesized from choline and acetyl-coA by the choline acetyltransferase (ChAT) enzyme, and a specific marker of cholinergic neurons. The regulation of ChAT activity is thought to be important during the development of nervous systems interactions. The reduction of ChAT activity has been found in several neurodegenerative disorders including Alzheimer's and amyotrophic lateral sclerosis.

**Purification:** Was purified by Protein A and peptide affinity chromatography.

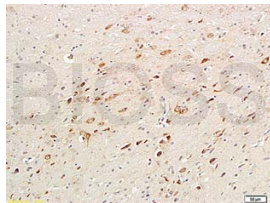
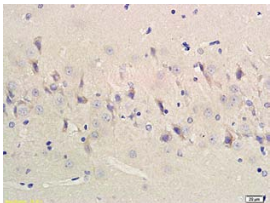
#### Storage:

Prepared as lyophilized powder and shipped on ice. Store at -20°C for one year as lyophilized powder or liquid. Please reconstitute before use.

#### Reconstitution:

If the antibody is in liquid form, no reconstitution needed.

Reconstitution is only required for the lyophilized antibody. Please refer to the reconstitution instruction card in the package.



For full size images and description please click [HERE](#).

**Size:** 100ul or 100ug lyophilized

**Concentration:** 1ug/uL

**Host:** Rabbit

**Reactivities:** Human, Mouse, Rat, Dog, Pig,

**Application:**

- WB(1:100-500)
- ELISA(1:500-1000)
- IHC-P(1:100-500)
- IHC-F(1:100-500)
- Not yet tested in other applications. Optimal working dilutions must be determined by the end user.

**Antibody Type:** Polyclonal

**Isotype:** IgG

**Molecular Weight:** 68-70kDa

**Preservatives:**

10ug/uL BSA and 0.1% NaN<sub>3</sub>.

For research use only. CAUTION: Not for human or animal therapeutic or diagnostic use.