

## bs-0071R-Biotin

### • Rabbit Anti-Neuropeptide Y Polyclonal Antibody, Biotin conjugated

Conjugated Primary Antibodies

#### Background:

Neurobiology

Neuropeptide Y (NPY) is a 36 amino acid peptide neurotransmitter found in the brain and autonomic nervous system. NPY has been associated with a number of physiologic processes in the brain, including the regulation of energy balance, memory and learning, and epilepsy. The main effect is increased food intake and decreased physical activity. NPY is secreted by the hypothalamus, and in addition to increasing food intake, it increases the proportion of energy stored as fat and blocks nociceptive signals to the brain. NPY also augments the vasoconstrictor effects of noradrenergic neurons.

**Purification:** Was purified by Protein A and peptide affinity chromatography.

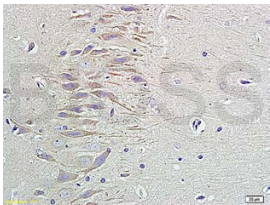
#### Storage:

Aqueous buffered solution containing 100ug/ml BSA, 50% glycerol and less than 0.09% sodium azide. Store at -20°C for 12 months. [Product without BSA and/or sodium azide is available for special order.]

#### Reconstitution:

If the antibody is in liquid form, no reconstitution needed.

Reconstitution is only required for the lyophilized antibody. Please refer to the reconstitution instruction card in the package.



For full size images and description please click [HERE](#).

**Size:** 100ul

**Concentration:** 1ug/uL

**Host:** Rabbit

#### Reactivities:

Human, Mouse, Rat, Bovine, Rabbit,

#### Application:

- ELISA(1:500-1000)
- IHC-P(1:100-500)
- Not yet tested in other applications. Optimal working dilutions must be determined by the end user.

**Antibody Type:** Polyclonal

**Isotype:** IgG

**Molecular Weight:** 8kDa

#### Note:

For research use only. CAUTION: Not for human or animal therapeutic or diagnostic use.