

## bs-0298R-Biotin

### • Rabbit Anti-IGBP1 Polyclonal Antibody, Biotin conjugated

Conjugated Primary Antibodies

#### Background:

The proliferation and differentiation of B cells is dependent upon a B-cell antigen receptor (BCR) complex. Binding of antigens to specific B-cell receptors results in a tyrosine phosphorylation reaction through the BCR complex and leads to multiple signal transduction pathways. [provided by RefSeq, Jul 2008].

**Purification:** Was purified by Protein A and peptide affinity chromatography.

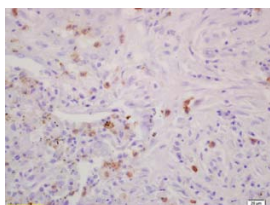
#### Storage:

Aqueous buffered solution containing 100ug/ml BSA, 50% glycerol and less than 0.09% sodium azide. Store at -20°C for 12 months. [Product without BSA and/or sodium azide is available for special order.]

#### Reconstitution:

If the antibody is in liquid form, no reconstitution needed.

Reconstitution is only required for the lyophilized antibody. Please refer to the reconstitution instruction card in the package.



For full size images and description please click [HERE](#).

**Size:** 100ul

**Concentration:** 1ug/uL

**Host:** Rabbit

**Reactivities:**

Human, Mouse, Rat, Pig, Bovine, Guinea Pig,

**Application:**

- WB(1:100-500)
- ELISA(1:500-1000)
- IHC-P(1:100-500)
- Not yet tested in other applications. Optimal working dilutions must be determined by the end user.

**Antibody Type:** Polyclonal

**Isotype:** IgG

**Molecular Weight:** 39kDa

**Note:**

For research use only. CAUTION: Not for human or animal therapeutic or diagnostic use.