

• Rabbit Anti-MRP1/ABCC1 Polyclonal Antibody

Primary Antibodies

Background:

The multidrug resistance-associated proteins (MRPs) are members of the ATP-binding cassette (ABC) protein superfamily which use ATP for active transport of a variety of endogenously produced and exogenously administered molecules. MRP1, a 190 kDa transporter protein, transports chemotherapeutic agents complexed to glutathione, leukotriene C4, glutathione disulfide, and estrogen. The protein is found predominantly in the heart, lung, small intestine, brain, and skin.

Source/Purification:

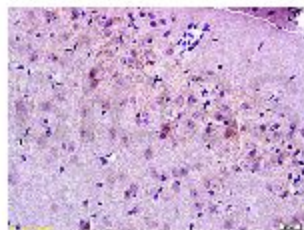
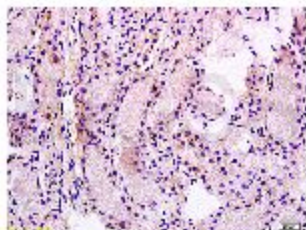
KLH conjugated synthetic peptide derived from mouse MRP1 N-terminus. Was purified by Protein A and peptide affinity chromatography.

Storage: Prepared as lyophilized powder or liquid and shipped on ice. Store at -20°C for one year.

Reconstitution:

If the antibody is in liquid form, no reconstitution needed.

Reconstitution is only required for the lyophilized antibody. Please refer to the reconstitution instruction card in the package.



Size: 100ul or 100ug lyophilized

Concentration: 1ug/uL

Host: Rabbit

Reactivities:

Human, Mouse, Rat, Chicken, Cow,

Application:

- WB(1:100-500)
- ELISA(1:500-1000)
- IP(1:20-100)
- IHC-P(1:100-500)
- IHC-F(1:100-500)
- IF(1:100-500)
- Not yet tested in other applications.
Optimal working dilutions must be determined by the end user.

Antibody Type: Polyclonal

Isotype: IgG

Molecular Weight: 170kDa

Preservatives:

10ug/uL BSA and 0.1% NaN₃.

For research use only. CAUTION: Not for human or animal therapeutic or diagnostic use.