

## bs-0701R-A647

### • Rabbit Anti-Ceramide glucosyltransferase Polyclonal Antibody, Alexa Fluor 647 conjugated

Conjugated Primary Antibodies

#### Background:

GCS (glucosylceramide synthase ) may serve as a 'flippase' as well as a glucosyltransferase that transfers glucose to ceramide. Able to use UDP-galactose to synthesize galactosylceramide with 10% of efficiency with which it utilizes UDP-glucose. [Catalytic activity] UDP-glucose + N-acylsphingosine = UDP + D-glucosyl-N-acylsphingosine. Lipid metabolism; sphingolipid metabolism. [Subcellular location] Endoplasmic reticulum membrane; Multi-pass membrane protein. Belongs to the glucosyltransferase 2 family.

**Purification:** Was purified by Protein A and peptide affinity chromatography.

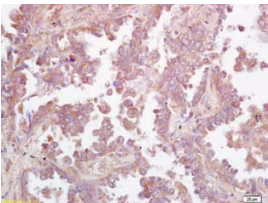
#### Storage:

Aqueous buffered solution containing 100ug/ml BSA, 50% glycerol and less than 0.09% sodium azide. Store at -20°C for 12 months. Protect from light. [Product without BSA and/or sodium azide is available for special order.]

#### Reconstitution:

If the antibody is in liquid form, no reconstitution needed.

Reconstitution is only required for the lyophilized antibody. Please refer to the reconstitution instruction card in the package.



For full size images and description please click [HERE](#).

**Size:** 100ul

**Concentration:** 1ug/uL

**Host:** Rabbit

**Reactivities:** Human, Mouse, Rat, Bovine,

#### Application:

- IF (1:100-500)
- Not yet tested in other applications. Optimal working dilutions must be determined by the end user.

**Antibody Type:** Polyclonal

**Isotype:** IgG

**Molecular Weight:** 44kDa

#### Note:

For research use only. CAUTION: Not for human or animal therapeutic or diagnostic use.