

bs-0828R

• Rabbit Anti-PAR-1/Thrombin receptor Polyclonal Antibody

Primary Antibodies

Background:

Thrombin receptor is a 7 transmembrane G protein coupled receptor involved in the regulation of thrombotic response. Proteolytic cleavage leads to the activation of the receptor. It may play a role in platelet activation and in vascular development. Thrombin receptor expression has been documented in various blood cells, colon, kidney, liver, lung, skin, and vessel. ESTs have been isolated from adrenal, embryo, heart, heart/melanocyte/uterus, liver/spleen, pineal, skin, spleen, and vessel.

Source/Purification:

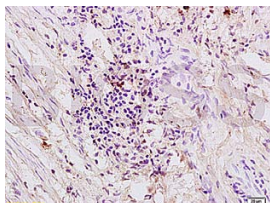
KLH conjugated synthetic peptide derived from human PAR1 C-terminus. Was purified by Protein A and peptide affinity chromatography.

Storage: Prepared as lyophilized powder or liquid and shipped on ice. Store at -20°C for one year.

Reconstitution:

If the antibody is in liquid form, no reconstitution needed.

Reconstitution is only required for the lyophilized antibody. Please refer to the reconstitution instruction card in the package.



For full size images and description please click [HERE](#).

Size: 100ul or 100ug lyophilized

Concentration: 1ug/uL

Host: Rabbit

Reactivities: Human, Mouse, Rat,

Application:

- WB(1:100-500)
- ELISA(1:500-1000)
- IP(1:20-100)
- IHC-P(1:100-500)
- IHC-F(1:100-500)
- IF(1:100-500)
- Not yet tested in other applications. Optimal working dilutions must be determined by the end user.

Antibody Type: Polyclonal

Isotype: IgG

Molecular Weight: 42kDa

Preservatives:

10ug/uL BSA and 0.1% NaN₃.

For research use only. CAUTION: Not for human or animal therapeutic or diagnostic use.