

bs-1058R-Biotin

• Rabbit Anti-LIF Polyclonal Antibody, Biotin conjugated

Conjugated Primary Antibodies

Background:

The leukemia inhibitory factor- LIF is a kind of cell factor that has various living creature functions. It has the leukemia cell of inducement to divide, regulating the growth metabolism of the bone organization, maintaining the basic characteristic of the Embryonicstem celles and promoting the mankind build the blood stem cell to divide to propagate, promote the cholinergic neuron to divide, obstruct the fat cell to synthesize, stimulate the muscle cell growth, regulate the liver cell to expect to respond the egg white to synthesize etc. in the acute the biology activity etc. function.

Purification: Was purified by Protein A and peptide affinity chromatography.

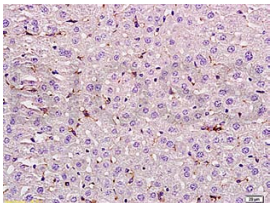
Storage:

Prepared as lyophilized powder and shipped on ice. Store at -20°C for one year as lyophilized powder or liquid. Please reconstitute before use.

Reconstitution:

If the antibody is in liquid form, no reconstitution needed.

Reconstitution is only required for the lyophilized antibody. Please refer to the reconstitution instruction card in the package.



For full size images and description please click [HERE](#).

Size: 100ul or 100ug lyophilized

Concentration: 1ug/uL

Host: Rabbit

Reactivities:

Human, Mouse, Rat, Dog, Pig, Cow, Rabbit,

Application:

- WB(1:100-500)
- ELISA(1:500-1000)
- IHC-P(1:100-500)
- IHC-F(1:100-500)
- Not yet tested in other applications. Optimal working dilutions must be determined by the end user.

Antibody Type: Polyclonal

Isotype: IgG

Molecular Weight: 22kDa

Preservatives:

10ug/uL BSA and 0.1% NaN₃.

For research use only. CAUTION: Not for human or animal therapeutic or diagnostic use.