

**• Rabbit Anti-E-Selectin/CD62E Polyclonal Antibody**

## Primary Antibodies

**Background:**

The endothelial leukocyte adhesion molecule-1 is expressed by cytokine-stimulated endothelial cells. It is thought to be responsible for the accumulation of blood leukocytes at sites of inflammation by mediating the adhesion of cells to the vascular lining. It exhibits structural features such as the presence of lectin- and EGF-like domains followed by short consensus repeat (SCR) domains that contain 6 conserved cysteine residues. These proteins are part of the selectin family of cell adhesion molecules. This gene is present in single copy in the human genome and contains 14 exons spanning about 13 kb of DNA. Adhesion molecules participate in the interaction between leukocytes and the endothelium and appear to be involved in the pathogenesis of atherosclerosis.

**Source/Purification:**

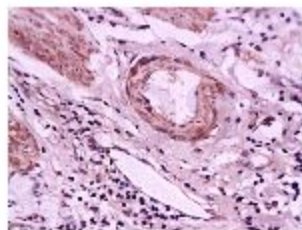
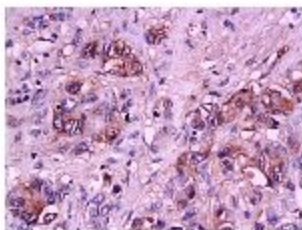
KLH conjugated synthetic peptide derived from mouse E-Selectin C-terminus. Was purified by Protein A and peptide affinity chromatography.

**Storage:** Prepared as lyophilized powder or liquid and shipped on ice. Store at -20°C for one year.

**Reconstitution:**

If the antibody is in liquid form, no reconstitution needed.

Reconstitution is only required for the lyophilized antibody. Please refer to the reconstitution instruction card in the package.



**Size:** 100ul or 100ug lyophilized

**Concentration:** 1ug/uL

**Host:** Rabbit

**Reactivities:**

Human, Mouse, Rat, Chicken, Dog, Horse, Rabbit,

**Application:**

- WB(1:100-500)
- ELISA(1:500-1000)
- IP(1:20-100)
- IHC-P(1:100-500)
- IHC-F(1:100-500)
- IF(1:100-500)
- Not yet tested in other applications.  
Optimal working dilutions must be determined by the end user.

**Antibody Type:** Polyclonal

**Isotype:** IgG

**Molecular Weight:** 65kDa

**Preservatives:**

10ug/uL BSA and 0.1% NaN<sub>3</sub>.

For research use only. CAUTION: Not for human or animal therapeutic or diagnostic use.