

bs-4625R-PE-Cy3

• Rabbit Anti-CK12 Polyclonal Antibody, PE-Cy3 conjugated

Conjugated Primary Antibodies

Background:

Cytokeratin 12 is a member of the intermediate filament family of proteins and is a heterotetramer of two type I and two type II keratins. Keratin 3 is specifically expressed in the corneal epithelium with family member KRT12. Cytokeratin 12 encodes the type I intermediate filament chain keratin 12, expressed in corneal epithelia. Defects in KRT3 and KRT12 are a cause of Meesmann corneal dystrophy (MCD), an autosomal dominant disease that causes fragility of the anterior corneal epithelium. Symptoms occur in adulthood and include rupture of the corneal microcysts that may lead to photophobia, contact lens intolerance and intermittent diminution of visual acuity. Defects in KRT12 are a cause of juvenile epithelial corneal dystrophy of Meesmann (MCD)

Purification: Was purified by Protein A and peptide affinity chromatography.

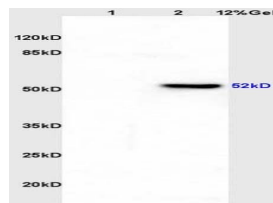
Storage:

Aqueous buffered solution containing 100ug/ml BSA, 50% glycerol and less than 0.09% sodium azide. Store at -20°C for 12 months. Protect from light. [Product without BSA and/or sodium azide is available for special order.]

Reconstitution:

If the antibody is in liquid form, no reconstitution needed.

Reconstitution is only required for the lyophilized antibody. Please refer to the reconstitution instruction card in the package.



For full size images and description please click [HERE](#).

Size: 100ul

Concentration: 1ug/uL

Host: Rabbit

Reactivities:

Human, Mouse, Rat, Dog, Rabbit,

Application:

- IF(1:100-500)
- Not yet tested in other applications. Optimal working dilutions must be determined by the end user.

Antibody Type: Polyclonal

Isotype: IgG

Molecular Weight: 54kDa

Note:

For research use only. CAUTION: Not for human or animal therapeutic or diagnostic use.