

bs-7575R-Cy7

• Rabbit Anti-SEC14 like protein 2 Polyclonal Antibody, Cy7 conjugated

Conjugated Primary Antibodies

Background:

Carrier protein. Binds to some hydrophobic molecules and promotes their transfer between the different cellular sites. Binds with high affinity to alpha-tocopherol. Also binds with a weaker affinity to other tocopherols and to tocotrienols. May have a transcriptional activatory activity via its association with alpha-tocopherol. Probably recognizes and binds some squalene structure, suggesting that it may regulate cholesterol biosynthesis by increasing the transfer of squalene to a metabolic active pool in the cell.

Tissue specificity: Widely expressed. Strong expression in liver, brain and prostate.

Purification: Was purified by Protein A and peptide affinity chromatography.

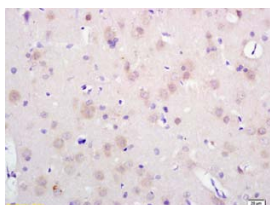
Storage:

Aqueous buffered solution containing 100ug/ml BSA, 50% glycerol and less than 0.09% sodium azide. Store at -20°C for 12 months. Protect from light. [Product without BSA and/or sodium azide is available for special order.]

Reconstitution:

If the antibody is in liquid form, no reconstitution needed.

Reconstitution is only required for the lyophilized antibody. Please refer to the reconstitution instruction card in the package.



For full size images and description please click [HERE](#).

Size: 100ul

Concentration: 1ug/uL

Host: Rabbit

Reactivities: Human, Mouse, Rat,

Application:

- IF (1:100-500)
- Not yet tested in other applications. Optimal working dilutions must be determined by the end user.

Antibody Type: Polyclonal

Isotype: IgG

Molecular Weight: 46kDa

Note:

For research use only. CAUTION: Not for human or animal therapeutic or diagnostic use.