

## Monoclonal anti human PDGF-B

### ORDERING INFORMATION

<b>Catalog Number:</b>	<b>hAP-0014</b>
<b>Size:</b>	<b>100 µg</b>
<b>Storage:</b>	<b>&lt; -20 °C</b>
<b>Immunogen:</b>	<b>human PDGF B recombinant protein</b>
<b>Ig Type:</b>	<b>IgG1</b>
<b>Clone:</b>	<b>MM0014-5F66</b>
<b>Applications:</b>	<b>WB and IHC</b>

**Preparation:** This antibody was produced from a hybridoma (mouse myeloma fused with spleen cells from a mouse immunized with human PDGF BB).

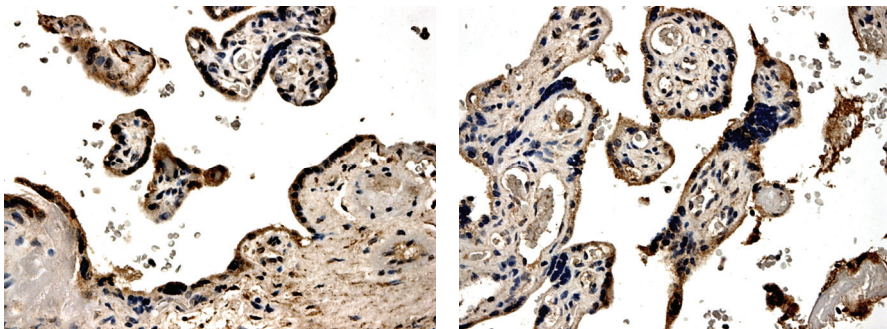
**Formulation and Storage:** The IgG fraction of culture supernatant was purified by Protein G affinity chromatography and lyophilized from a 0.2 µm filtered solution in phosphate-buffered saline (PBS). Lyophilized samples are stable for 2 years from date of receipt when stored at -70°C.

**Reconstitution:** Reconstitute the antibody with 500 µl sterile PBS and the final concentration is 200µg/ml. Reconstituted antibody can also be aliquoted and stored frozen at < -20 for at least for six months without detectable loss of activity. **Avoid repeated freeze-thaw cycles.**

**Specificity:** This antibody shows approximately some degree (40%) cross-reactivity with rPDGF-AB and no cross-reactivity with recombinant PDGF-AA.

### Applications

1. <b>Western Blot:</b>	<b>Yes</b>	<b>(1: 1000)</b>
2. <b>Immunohistochemistry</b>	<b>Yes</b>	<b>(1:50-200)</b>



**Human placenta (formalin fixed and paraffin embedded) section is subjected to IHC using MM0014-5F66.**

**Final dilutions should be optimized by the end users and the dilutions provided in the data sheet are for reference only**

Contact & Ordering Information: Angio-Proteomie, 11 Park Drive, Suite 12, Boston, MA 02215, USA. Fax: (480) 247-4337, [angioproteomie@gmail.com](mailto:angioproteomie@gmail.com)