

Monoclonal anti-human E-Selectin

ORDERING INFORMATION

Catalog No:	hAP-0032
Size:	100 µg
Storage:	< -20° C
Immunogen:	human rE-Selectin
Ig Type:	mouse IgG2
Clone:	MM0032-9E7
Applications:	Western blot & Immunohistochemistry

Preparation: This antibody was produced from a hybridoma (mouse myeloma fused with spleen cells from a mouse immunized with purified human recombinant E-selectin protein).

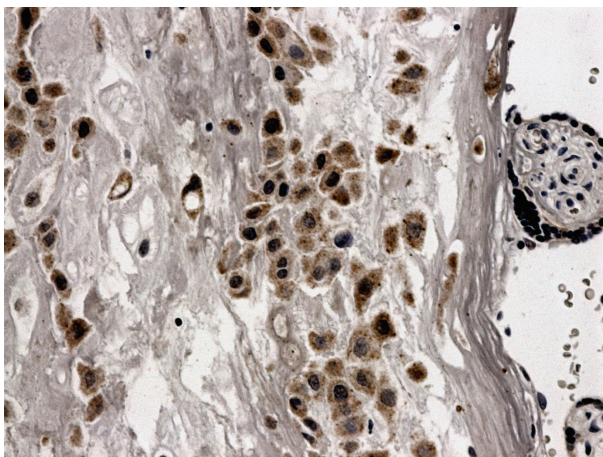
Formulation and Storage: The IgG fraction of culture supernatant was purified by Protein G affinity chromatography and lyophilized from a 0.2 µm filtered solution in phosphate-buffered saline (PBS). Lyophilized samples are stable for 2 years from date of receipt when stored at -70°C.

Reconstitution: Reconstitute the antibody with 500 µl sterile PBS and the final concentration is 200µg/ml. Reconstituted antibody can also be aliquoted and stored frozen at < -20 for at least for six months without detectable loss of activity. **Avoid repeated freeze-thaw cycles.**

Specificity: This antibody recognizes human E-selectin in western blot. Reactivity to E-Selectin of other species is not tested. No cross reactivity to ICAM, and VCAM.

Applications:

- | | | |
|---|------------|---------------------|
| 1. Western blotting: | Yes | (1:500-2000) |
| 2. Immunohistochemistry (Paraffin) | Yes | (1:25 -50) |



Formalin fixed and paraffin embedded normal human placenta tissue is subjected to mouse anti human E-Selectin (hAP-0032).

Final dilutions should be optimized by the end users and the dilutions provided in the data sheet are for reference only

Contact & Ordering Information: Angio-Proteomie, 11 Park Drive, Suite 12, Boston, MA 02215, USA. Tel: 001-6175492665; Fax: 001-4802474337, angioproteomie@gmail.com