

## Mouse Monoclonal anti-human CTGF

### ORDERING INFORMATION

<b>Catalog No:</b>	<b>hAP-0038</b>
<b>Size:</b>	<b>100 µg</b>
<b>Storage:</b>	<b>&lt; -20° C</b>
<b>Immunogen:</b>	<b>human recombinant CTGF</b>
<b>Ig Type:</b>	<b>mouse IgG1</b>
<b>Clone:</b>	<b>MM0038-6B13</b>
<b>Applications:</b>	<b>ELISA and Immunohistochemistry</b>

**Preparation:** This antibody was produced from a hybridoma (mouse myeloma fused with spleen cells from a mouse immunized with recombinant human Connective Tissue Growth Factor (CTGF)).

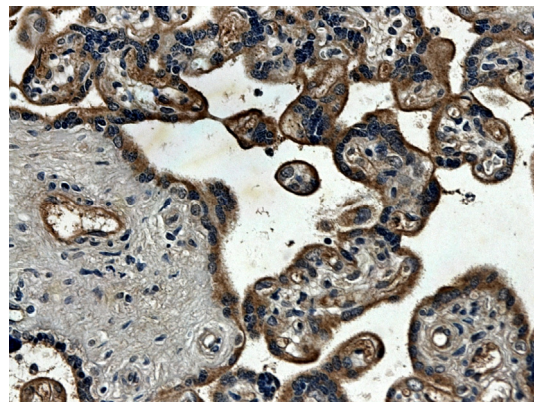
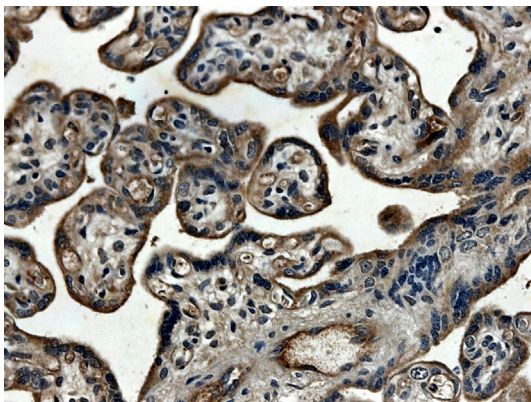
**Formulation and Storage:** The IgG fraction of culture supernatant was purified by Protein G affinity chromatography and lyophilized from a 0.2 µm filtered solution in phosphate-buffered saline (PBS). Lyophilized samples are stable for 2 years from date of receipt when stored at -70°C.

**Reconstitution:** Reconstitute the antibody with 500 µl sterile PBS and the final concentration is 200µg/ml. Reconstituted antibody can also be aliquoted and stored frozen at < -20 for at least for six months without detectable loss of activity. **Avoid repeated freeze-thaw cycles.**

**Specificity:** This antibody recognizes human CTGF with Elisa and immunohistochemistry.

### Applications:

- |  |            |                   |
|--|------------|-------------------|
| 1. <b>Immunohistochemistry (Paraffin):</b> | <b>Yes</b> | <b>(1:50-200)</b> |
| 2. <b>Elisa</b>                            | <b>Yes</b> |                   |



Formalin fixed and paraffin embedded human placental tissue section is subjected to IHC with anti-human CTGF (hAP-0042).

Final dilutions should be optimized by the end users and the dilutions provided in the data sheet are for reference only.

Contact & Ordering Information: Angio-Proteomie, 11 Park Drive, Suite 12, Boston, MA 02215, USA. Tel: 001-6175492665; Fax: 001-4802474337, [angioproteomie@gmail.com](mailto:angioproteomie@gmail.com)